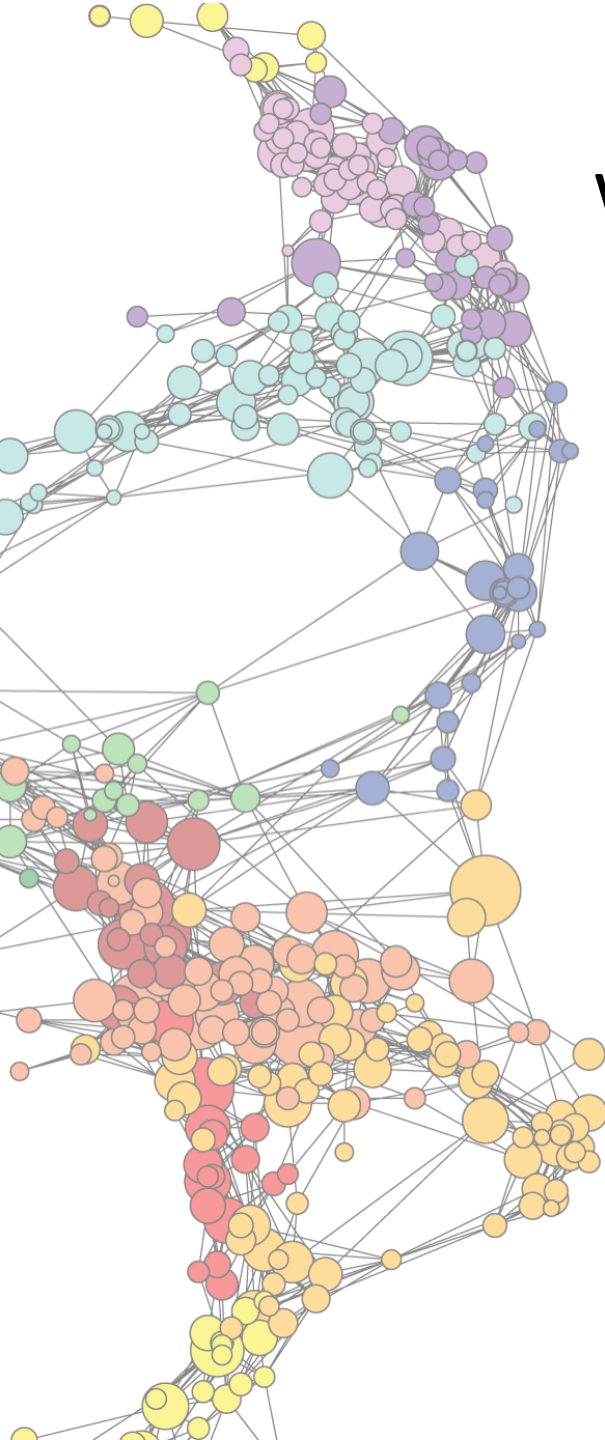


Tips for Effective Data Visualization

Angela Zoss · Eric Monson
Data and Visualization Services

STA 199L · Spring 2018

Slides: <http://bit.ly/STA199LVisSpring2018>



What is data visualization?

Anything that converts data sources into a visual representation

charts, graphs, maps, even just tables

<http://guides.library.duke.edu/datavis>

Why do we visualize?

1		2		3		4	
x	y	x	y	x	y	x	y
10.0	8.04	10.0	9.14	10.0	7.46	8.0	6.58
8.0	6.95	8.0	8.14	8.0	6.77	8.0	5.76
13.0	7.58	13.0	8.74	13.0	12.74	8.0	7.71
9.0	8.81	9.0	8.77	9.0	7.11	8.0	8.84
11.0	8.33	11.0	9.26	11.0	7.81	8.0	8.47
14.0	9.96	14.0	8.10	14.0	8.84	8.0	7.04
6.0	7.24	6.0	6.13	6.0	6.08	8.0	5.25
4.0	4.26	4.0	3.10	4.0	5.39	19.0	12.50
12.0	10.84	12.0	9.13	12.0	8.15	8.0	5.56
7.0	4.82	7.0	7.26	7.0	6.42	8.0	7.91
5.0	5.68	5.0	4.74	5.0	5.73	8.0	6.89

*Almost identical
summary statistics:*

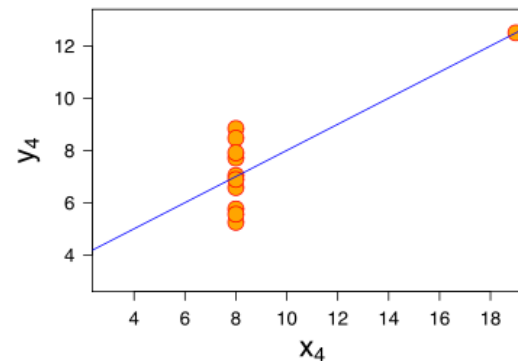
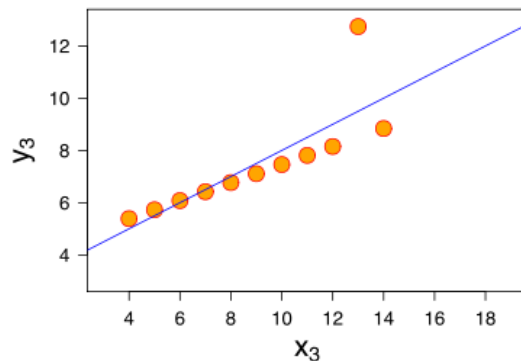
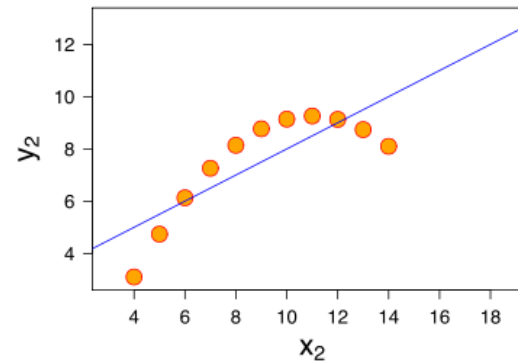
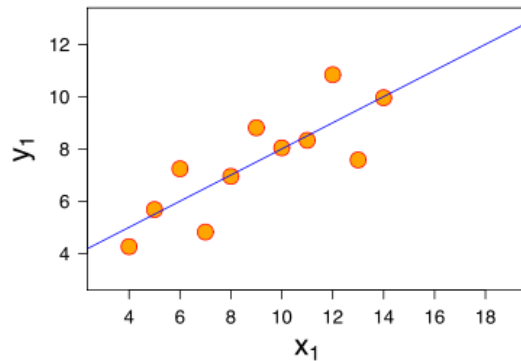
x & y mean

x & y variance

x-y correlation

x-y linear regression

We visualize to see patterns

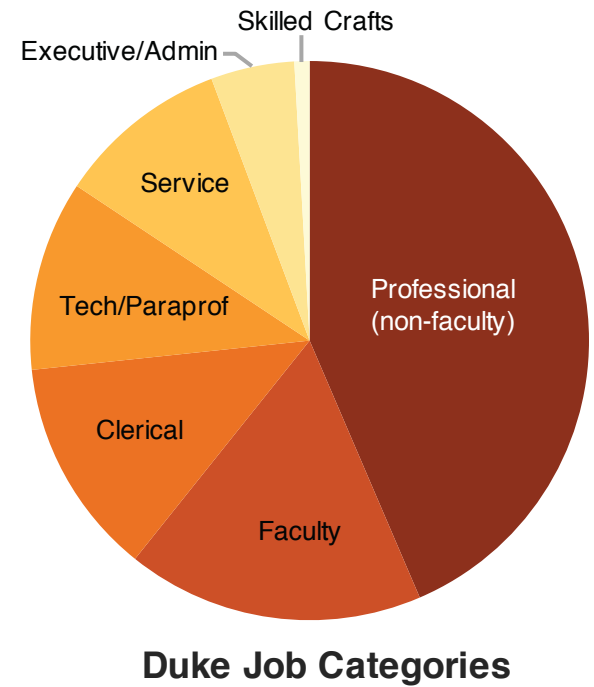
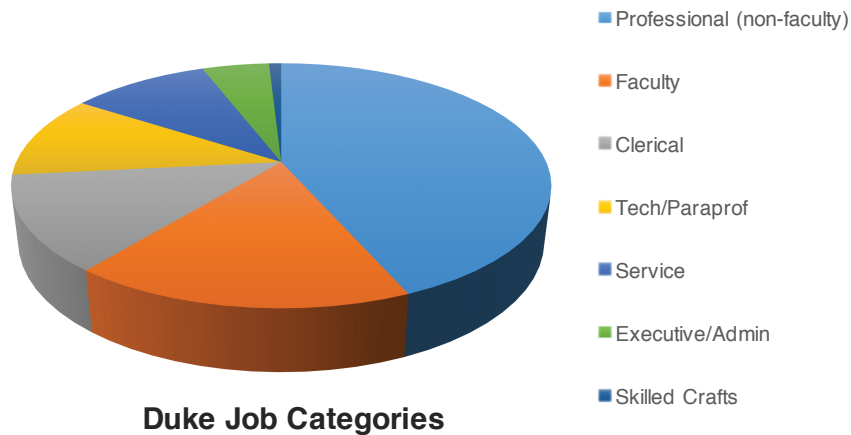


Anscombe's Quartet

http://en.wikipedia.org/wiki/Anscombe%27s_quartet

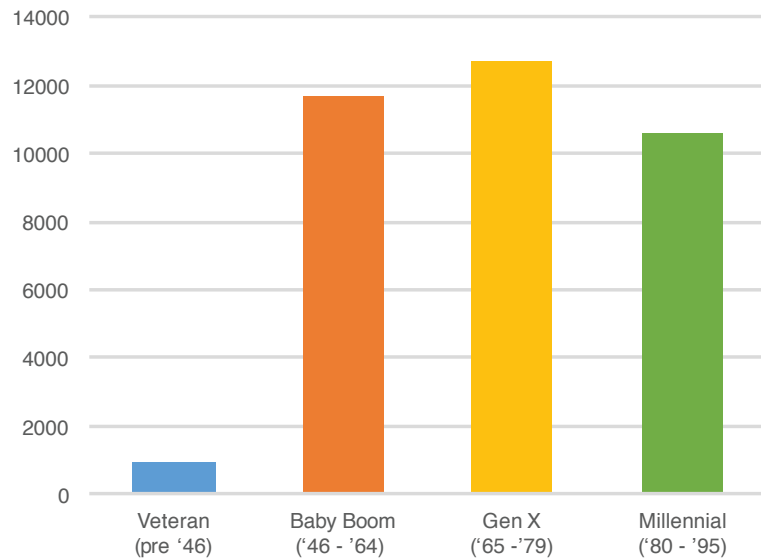
Designing effective visualizations

Keep it simple

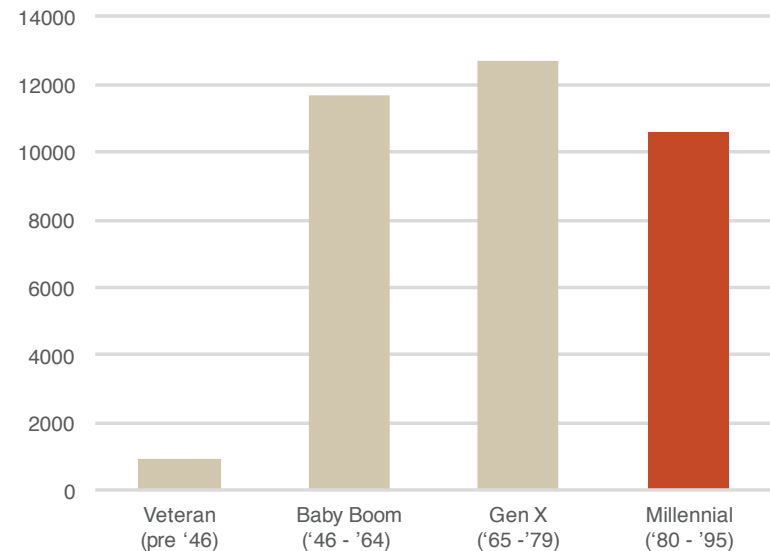


Use color to draw attention

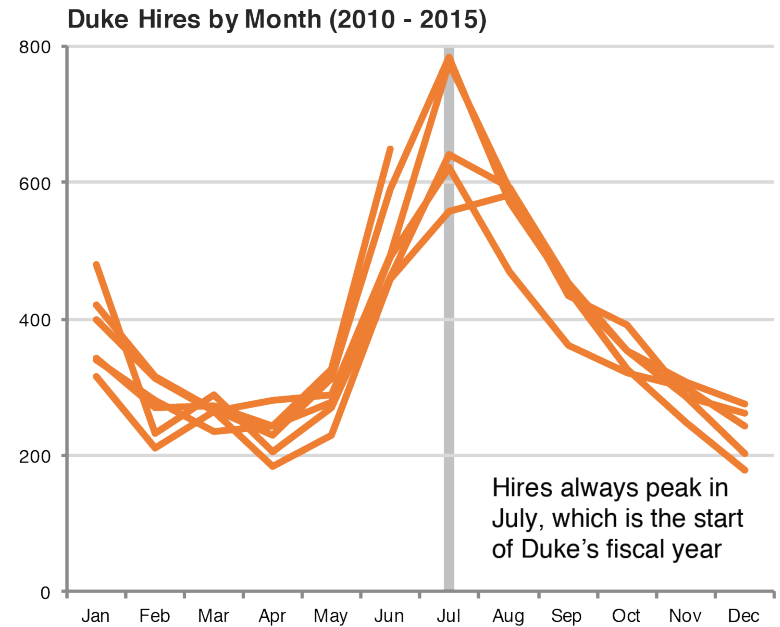
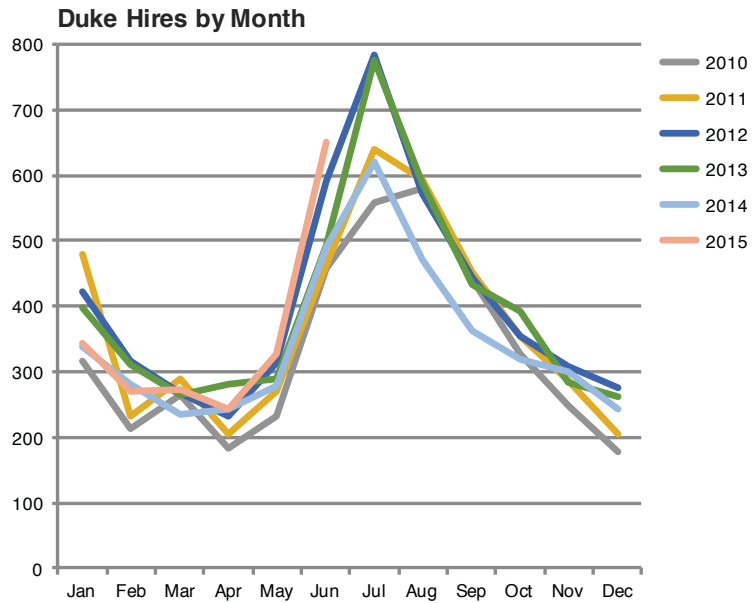
Current Duke Employment by Generation

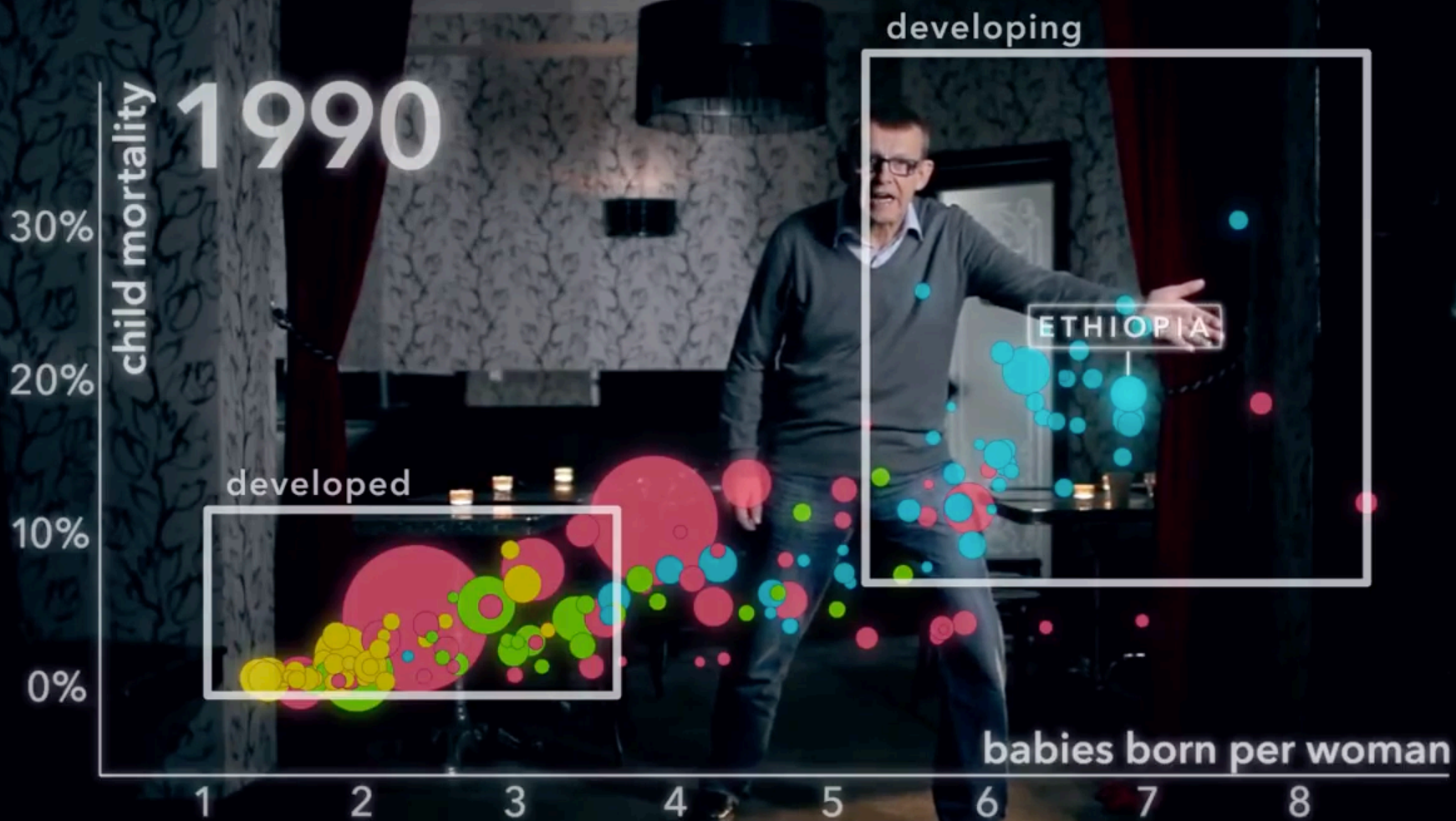


Current Duke Employment by Generation



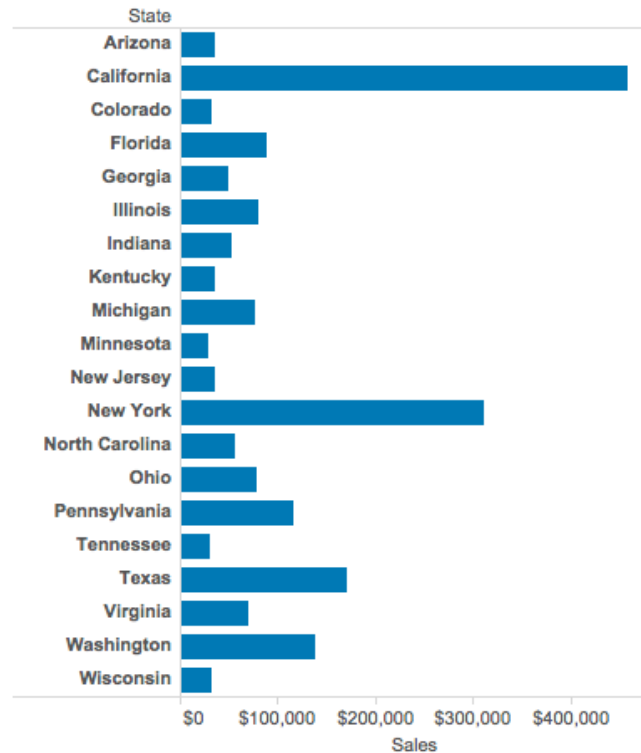
Tell a story



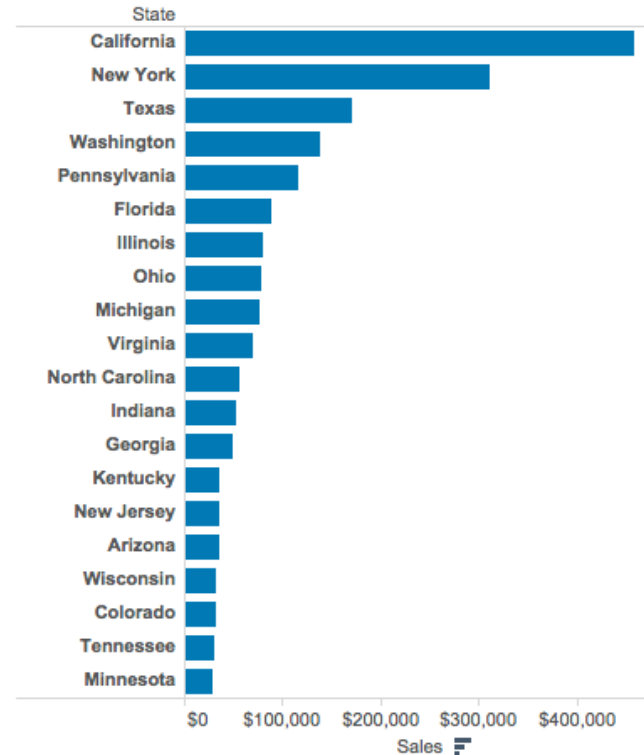
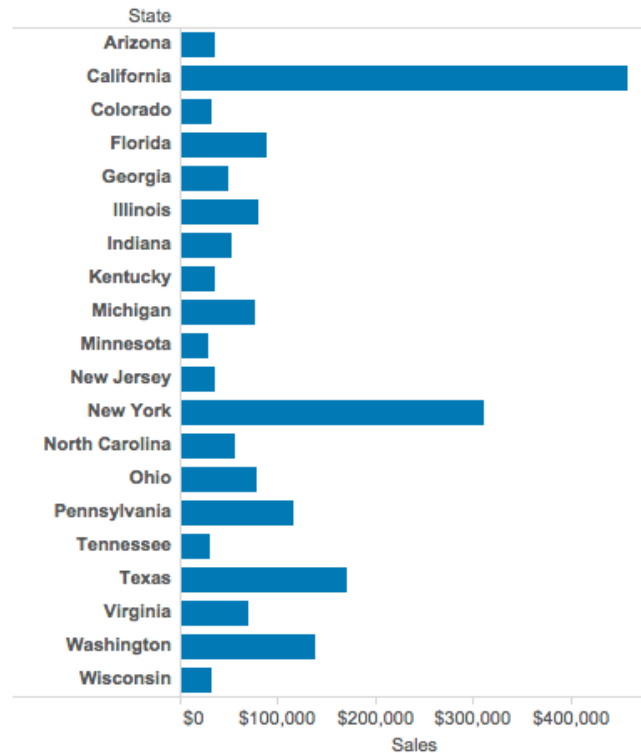


Common missteps

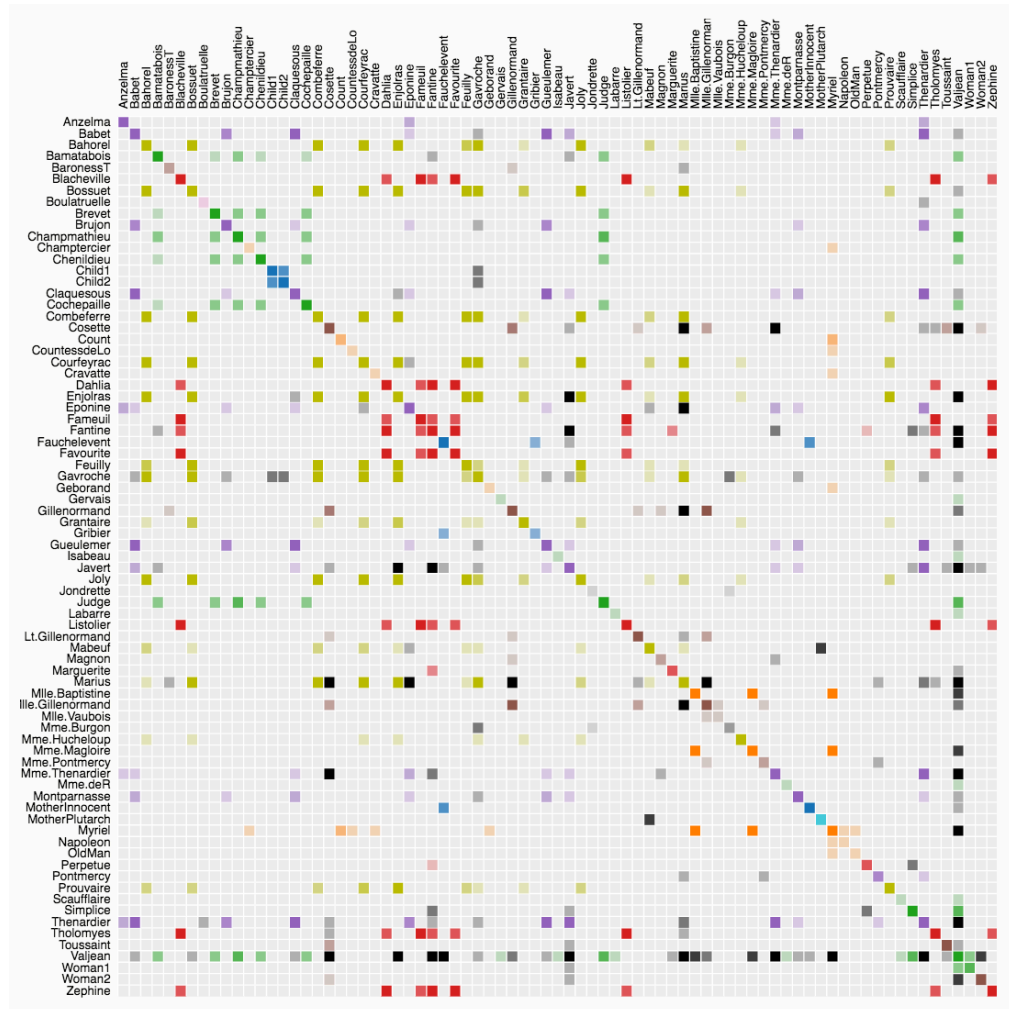
Default ordering hides patterns



Sorting reveals patterns

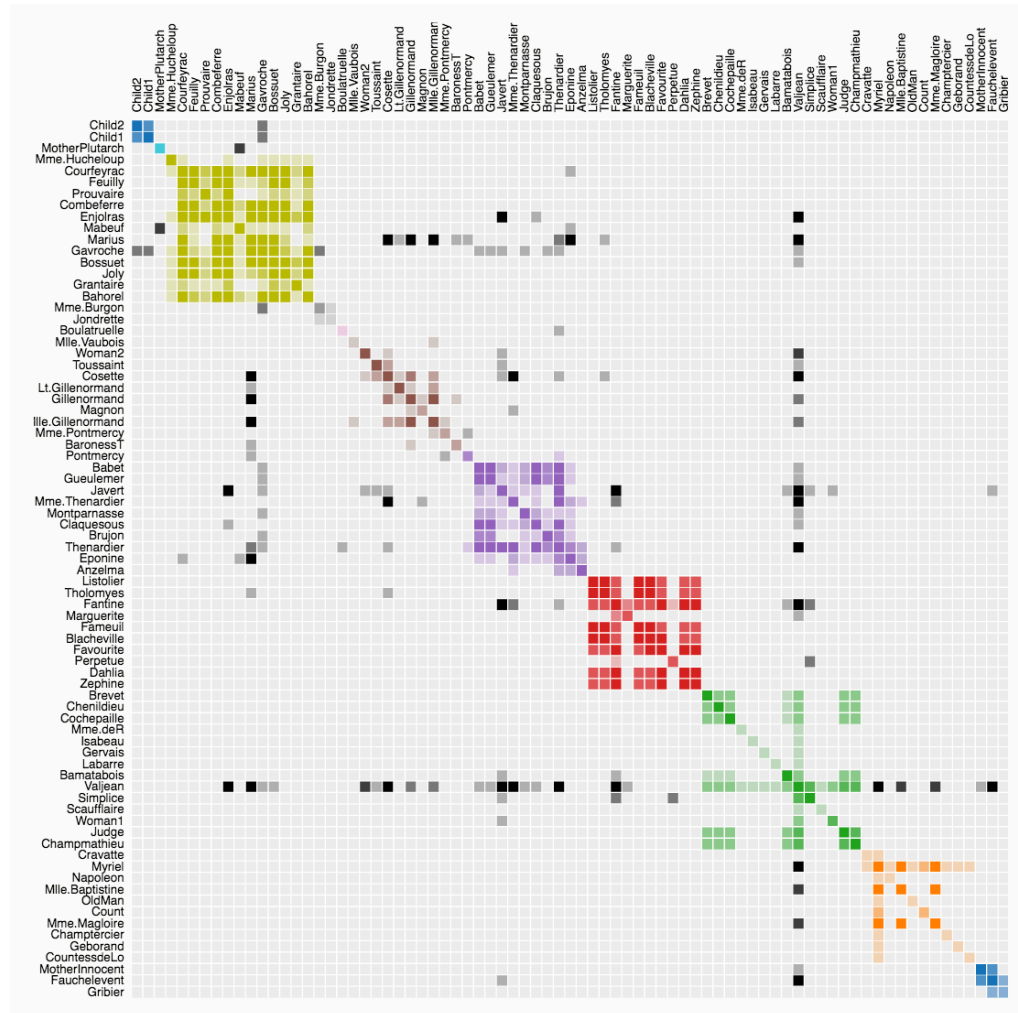


Default ordering hides patterns



<https://bost.ocks.org/mike/miserables/>

Cluster ordering reveals patterns



<https://bost.ocks.org/mike/miserables/>

Tables easily hide patterns

Trust rank	Index rank	Borough	Amount approved (£)	Number of grants
1	3	Tower Hamlets	£9,692,642	269
2	2	Hackney	£7,809,608	225
3	12	Southwark	£7,266,118	232
4	14	Camden	£6,140,419	136
5	4	Islington	£5,424,137	156
6	8	Lambeth	£5,257,941	156
7	2	Newham	£5,217,075	154
8	13	Hammersmith and Fulham	£4,085,708	109
9	29	Merton	£3,656,112	113
10	20	Croydon	£3,629,066	127
11	9	Lewisham	£3,537,049	144
12	17	Westminster	£3,357,911	100
13	15	Ealing	£3,057,709	84
14	30	Bromley	£3,038,621	131
15	19	Kensington and Chelsea	£2,979,468	74
16	11	Brent	£2,898,224	85
17	10	Greenwich	£2,837,658	87
18	24	Barnet	£2,796,587	99
19	21	Wandsworth	£2,592,453	89
20	5	Waltham Forest	£2,505,730	131
21	28	Sutton	£2,468,511	87
22	18	Hounslow	£2,383,393	75
23	7	Haringey	£2,360,290	101
24	22	Redbridge	£2,285,173	75
25	33	Reichmond upon Thames	£2,249,983	133
26	23	Hillingdon	£2,181,566	103
27	16	Enfield	£2,145,800	86
28	6	Barking and Dagenham	£1,943,597	68
29	25	Havering	£1,934,424	95
30	26	Bexley	£1,631,415	103
31	27	Harrow	£1,516,193	62
32	31	Kingston upon Thames	£1,353,125	55
33	32	City of London	£402,060	11
		Several Additional Inner Boroughs	£18,704,677	481
		Several Additional Outer Boroughs	£6,392,100	164
		Other	£28,566,830	566
		London-wide	£86,583,750	1214
		Total	£252,883,123	6180

Total grants spend by
London Borough
September 1995 to March 2011

[http://www.storytellingwithdata.com/
blog/2012/02/grables-and-taphs](http://www.storytellingwithdata.com/blog/2012/02/grables-and-taphs)

Total grant spend by London Borough

September 1995 - March 2011

Borough	Trust rank	Index rank	Number of grants	Amount approved (£)
Tower Hamlets	1	3	269	9,692,642
Hackney	2	2	225	7,809,608
Southwark	3	12	232	7,266,118
Camden	4	14	136	6,140,419
Islington	5	4	156	5,424,137
Lambeth	6	8	156	5,257,941
Newham	7	2	154	5,217,075
Hammersmith and Fulham	8	13	109	4,085,708
Merton	9	29	113	3,656,112
Croydon	10	20	127	3,629,066
Lewisham	11	9	144	3,537,049
Westminster	12	17	100	3,357,911
Ealing	13	15	84	3,057,709
Bromley	14	30	131	3,038,621
Kensington and Chelsea	15	19	74	2,979,468
Brent	16	11	85	2,898,224
Greenwich	17	10	87	2,837,658
Barnet	18	24	99	2,796,587
Wandsworth	19	21	89	2,592,453
Waltham Forest	20	5	131	2,505,730
Sutton	21	28	87	2,468,511
Hounslow	22	18	75	2,383,393
Haringey	23	7	101	2,360,290
Redbridge	24	22	75	2,285,173
Richmond upon Thames	25	33	133	2,249,983
Hillingdon	26	23	103	2,181,566
Enfield	27	16	86	2,145,800
Barking and Dagenham	28	6	68	1,943,597
Havering	29	25	95	1,934,424
Bexley	30	26	103	1,631,415
Harrow	31	27	62	1,516,193
Kingston upon Thames	32	31	55	1,353,125
City of London	33	32	11	402,060
Several Additional Inner Bouroughs			481	18,704,677
Several Additional Outer Boroughs			164	6,392,100
Other			566	28,566,830
London-wide			1,214	86,583,750

Total **6,180** **252,883,123**

Help people
see patterns
in tables

<http://www.storytellingwithdata.com/blog/2012/02/grables-and-taphs>

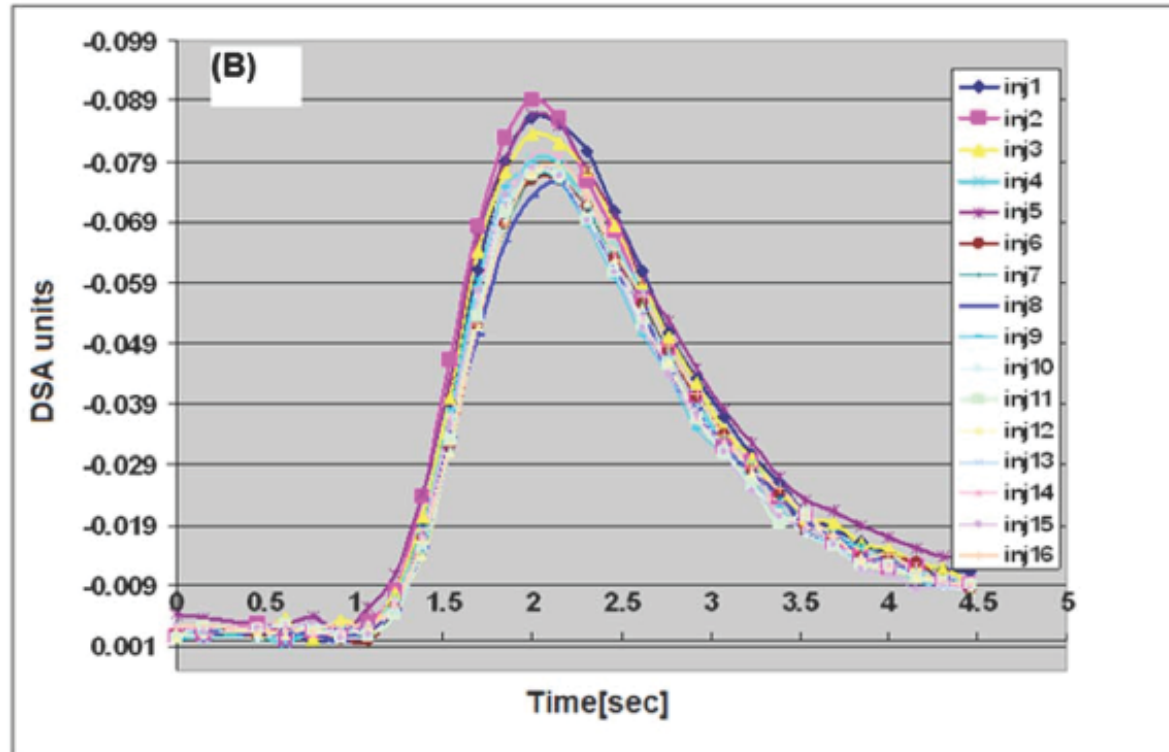
Help viewers interpret tables

- Limit and standardize decimal places
- Emphasize important values with color, bold text and annotations
- Sort rows by values
- Turn table into another chart or a handout

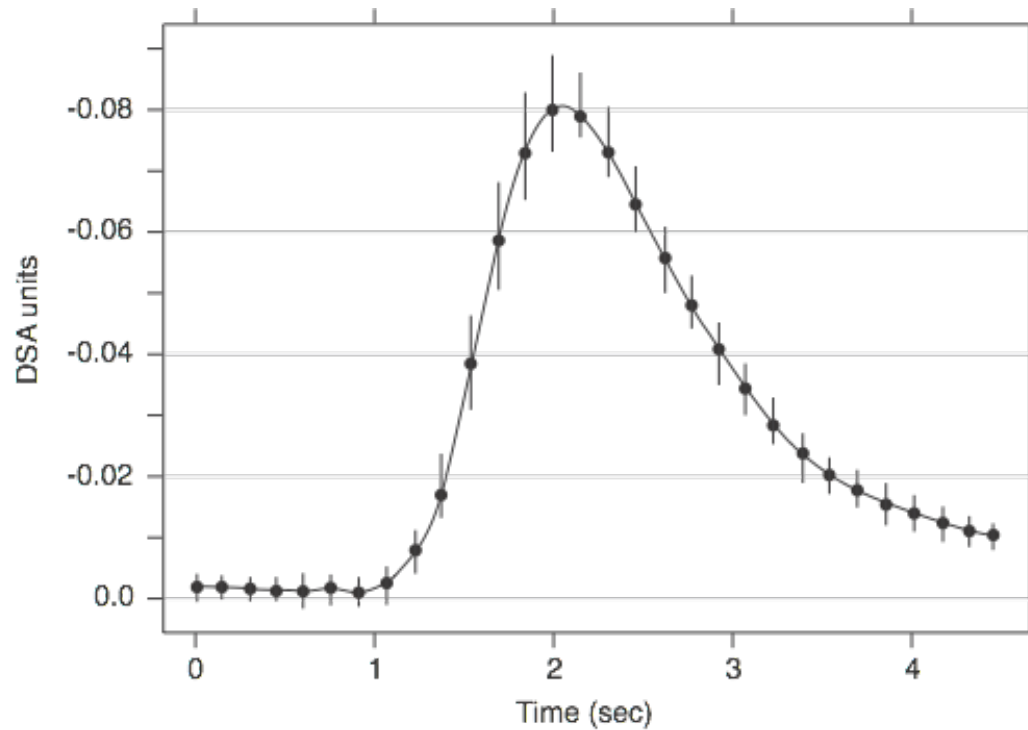
MDG 4 Progress 1990-2013: Low Income Countries

<u>Country</u>	<u>1990 (Per 1,000)</u>	<u>2013 (per 1,000)</u>	<u>Percent Change</u>	<u>2015 Target</u>	<u>Percent of Target Met</u>
Afghanistan	179	97	46%	60.9	69%
Bangladesh	144	41	72%	49	108%
Benin	179	85	53%	60.9	80%
Burkina Faso	202	98	51%	68.7	78%
Burundi	171	83	51%	58.1	78%
Cambodia	118	38	68%	40.1	103%
Central African Republic	177	139	21%	60.2	33%
Chad	215	148	31%	73.1	47%
Comoros	125	78	38%	42.5	57%
Congo, Democratic Republic of	176	119	32%	59.8	49%
Eritrea	151	50	67%	51.3	101%
Ethiopia	205	64	69%	69.7	104%
Gambia, The	170	74	56%	57.8	86%
Guinea	238	101	58%	80.9	87%
Guinea-Bissau	225	124	45%	76.5	68%
Haiti	145	73	50%	49.3	75%
Kenya	99	71	28%	33.7	43%
Korea, DPR	43	27	37%	14.6	56%
Liberia	248	71	71%	84.3	108%
Madagascar	161	56	65%	54.7	99%
Malawi	245	68	72%	83.3	109%
Mali	254	123	52%	86.4	78%
Mozambique	237	87	63%	80.6	96%
Myanmar	109	51	53%	37.1	81%
Nepal	142	40	72%	48.3	109%
Niger	327	104	68%	111.2	103%
Rwanda	152	52	66%	51.7	99.70%
Sierra Leone	268	161	40%	91.1	60%
Somalia	180	146	19%	61.2	29%
Tajikistan	108	48	56%	39.8	84%
Tanzania	167	52	69%	56.8	104%
Togo	146	85	42%	49.6	63%
Uganda	179	66	63%	60.9	96%
Zimbabwe	75	89	-19%	25.5	-28%

Leave out non-story details



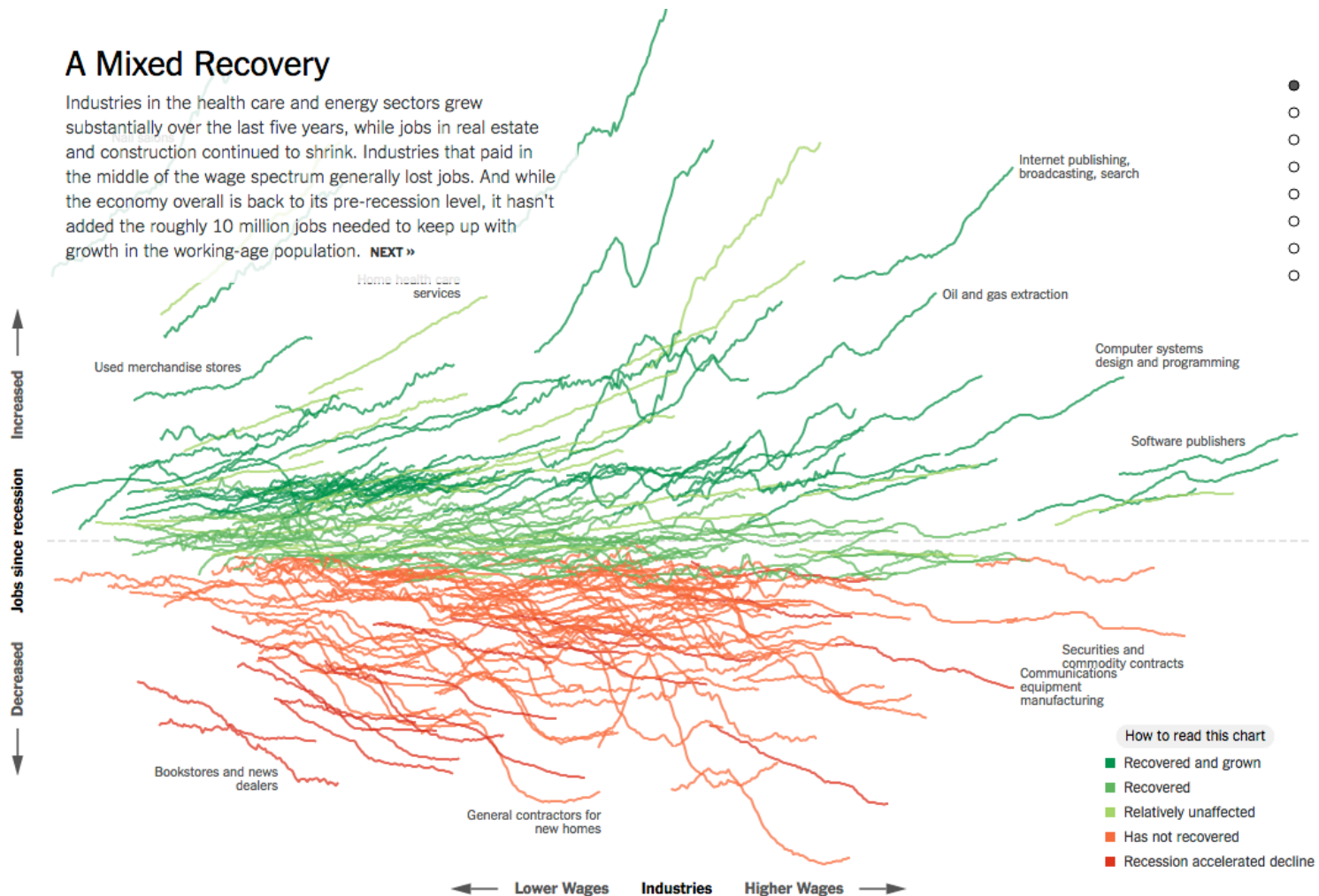
Leave out non-story details



All the data doesn't tell a story

A Mixed Recovery

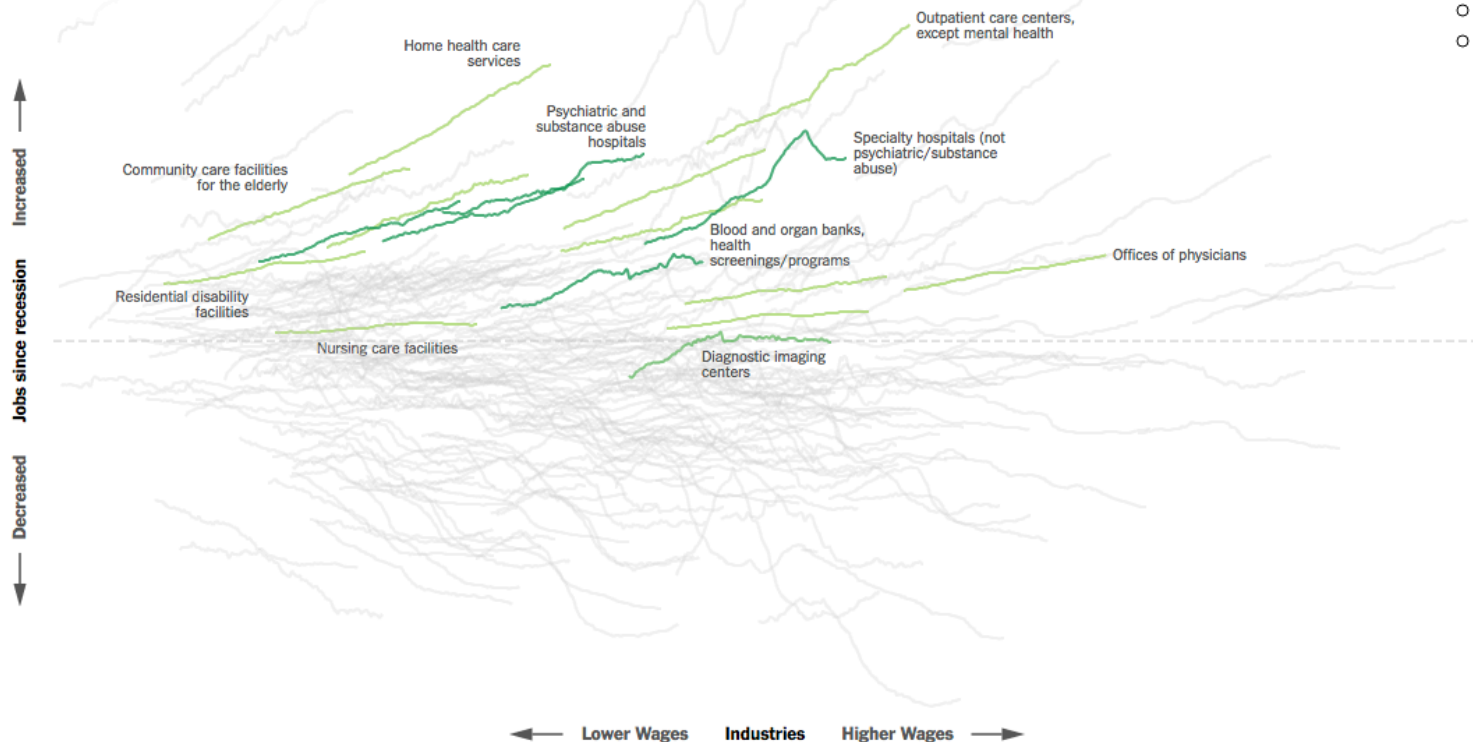
Industries in the health care and energy sectors grew substantially over the last five years, while jobs in real estate and construction continued to shrink. Industries that paid in the middle of the wage spectrum generally lost jobs. And while the economy overall is back to its pre-recession level, it hasn't added the roughly 10 million jobs needed to keep up with growth in the working-age population. **NEXT »**



All the data doesn't tell a story

The Medical Economy

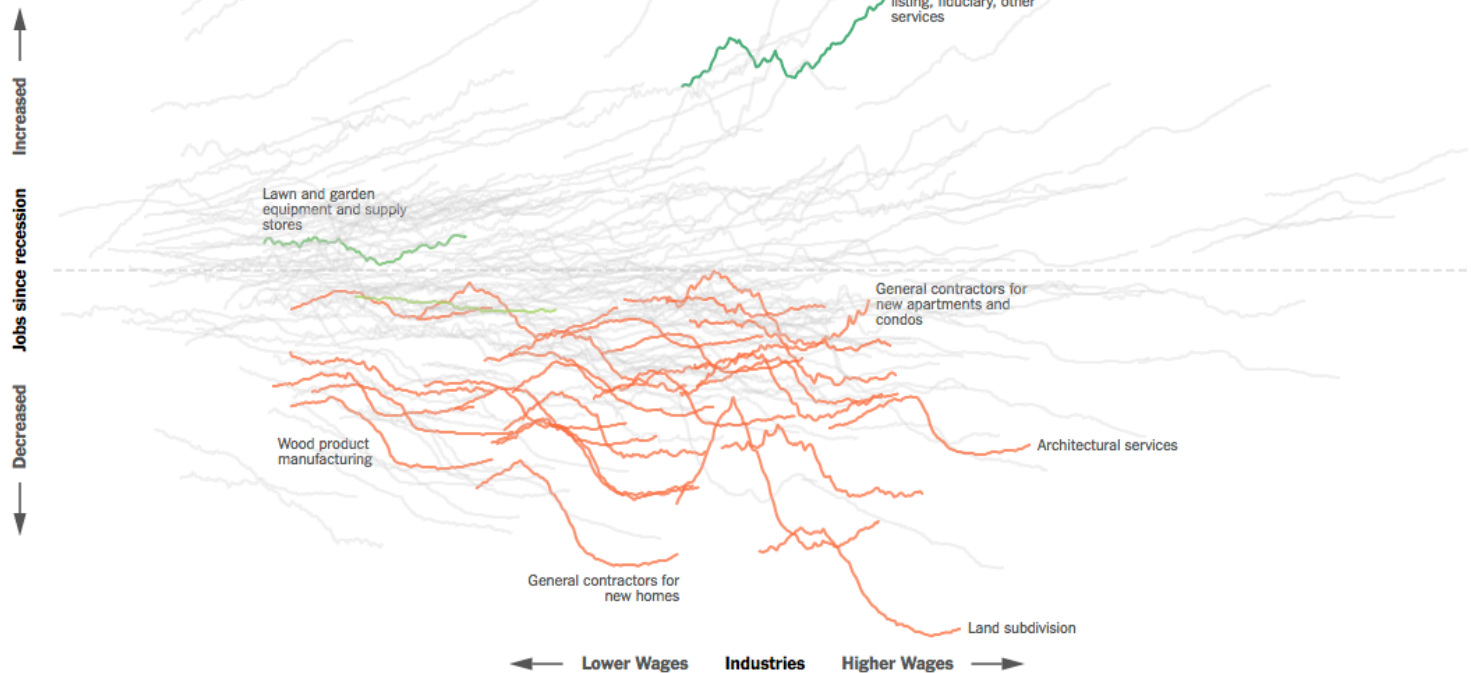
The middle-wage industries that have added jobs are overwhelmingly in health care. Labs, home-care providers and dentist offices all pay between \$18 and \$29 an hour on average — and all have grown. But these gains have not offset losses in other middle-wage industries, such as airlines and construction. **NEXT »**



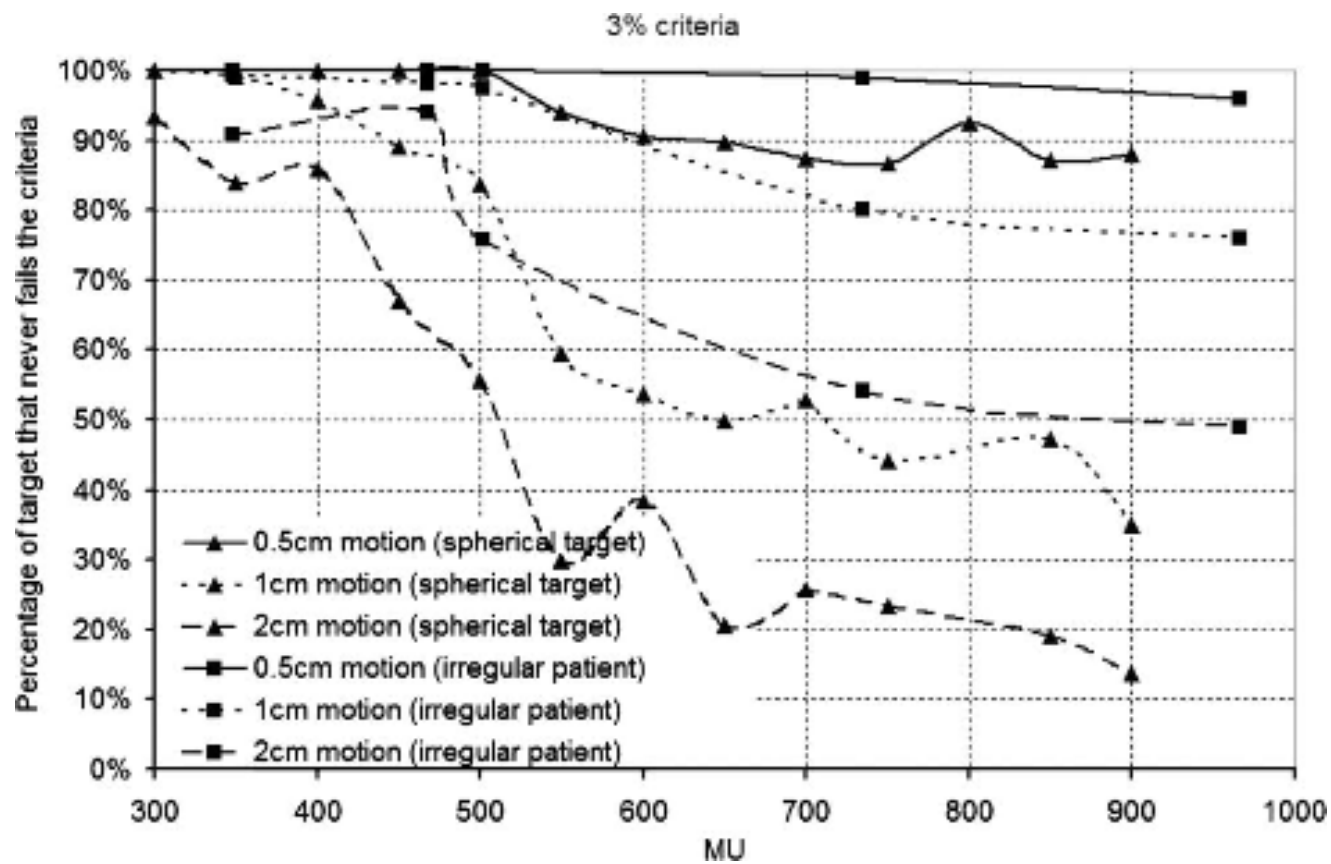
All the data doesn't tell a story

A Long Housing Bust

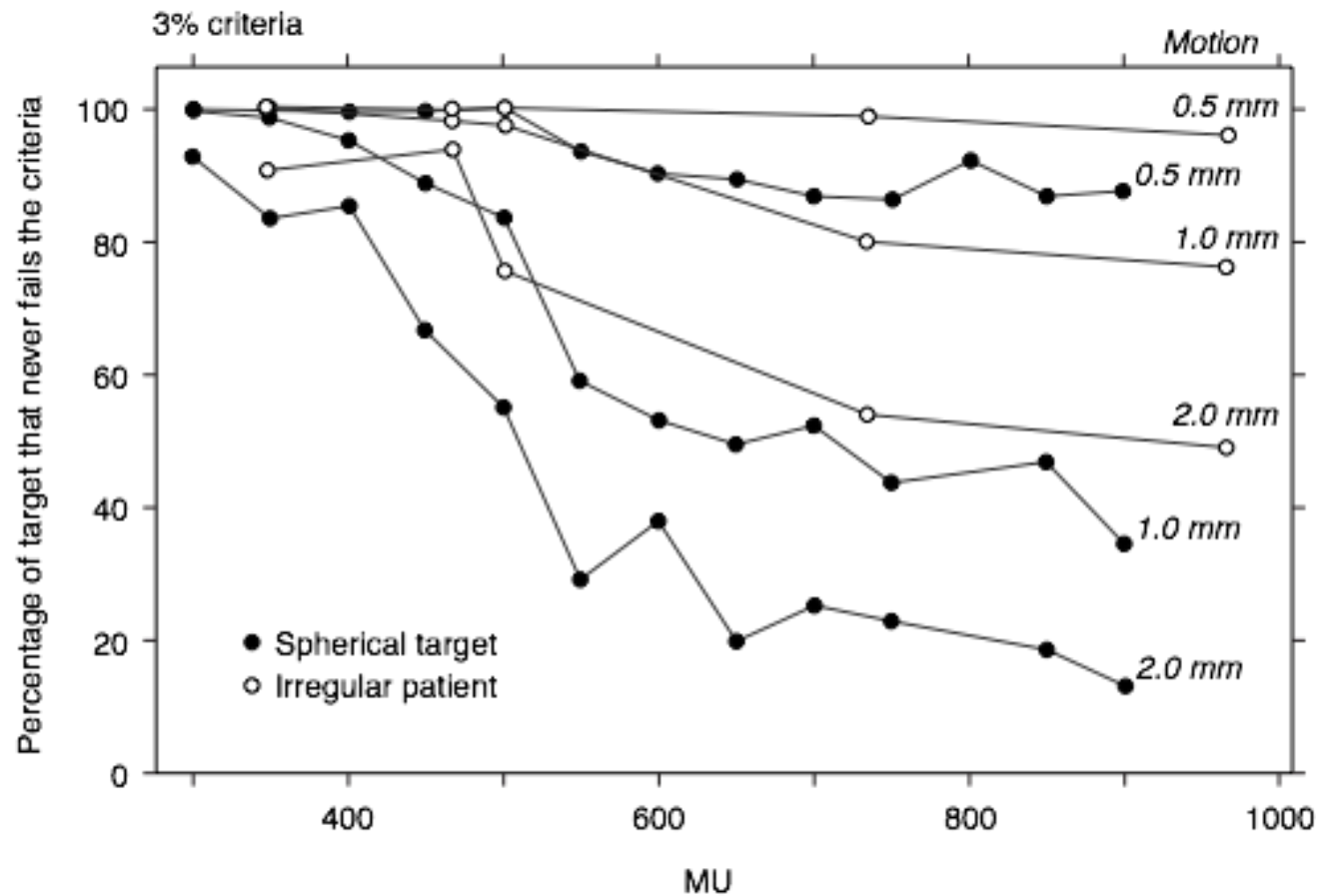
Home prices have rebounded from their crisis lows, but home building remains at historically low levels. Overall, industries connected with construction and real estate have lost 19 percent of their jobs since the recession began — hundreds of thousands more than health care has added. **NEXT »**



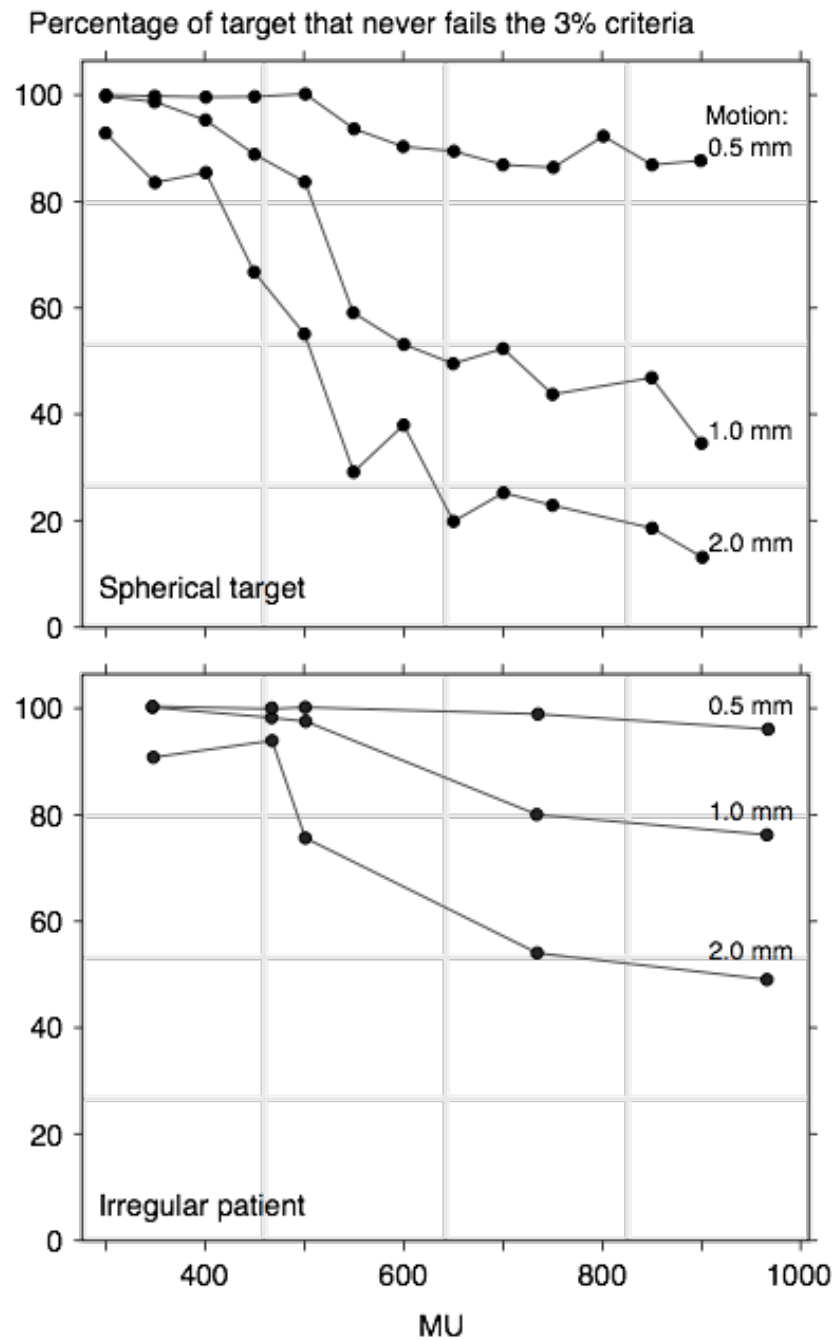
Original



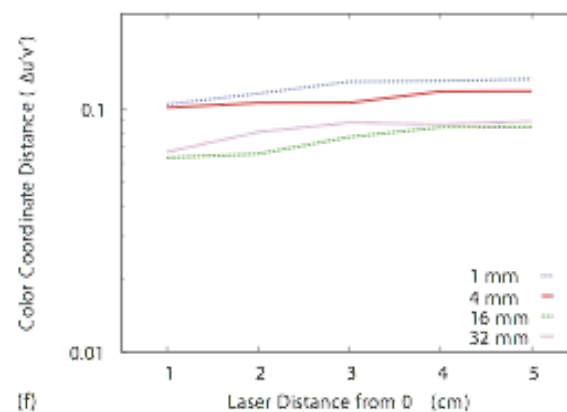
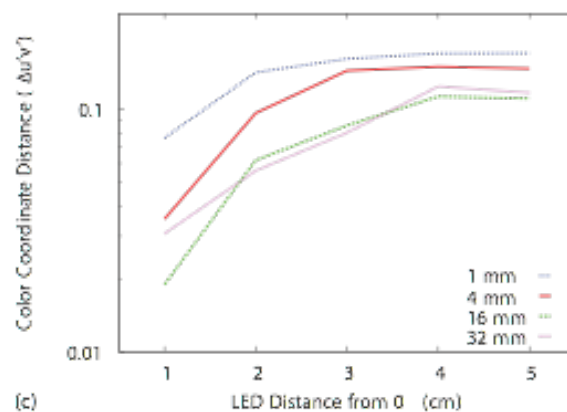
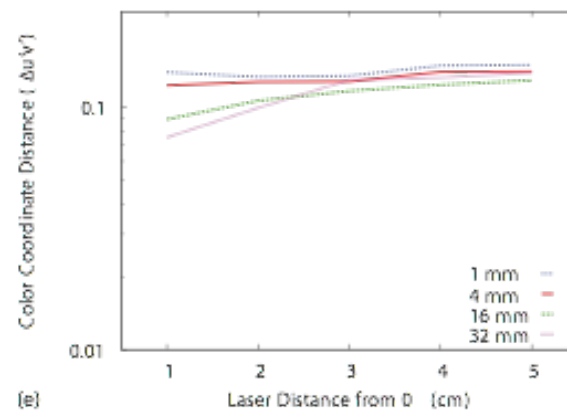
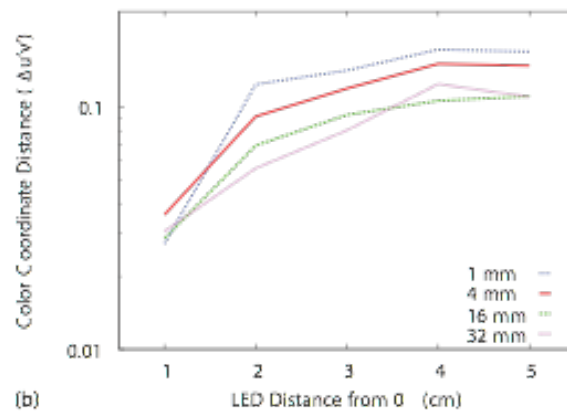
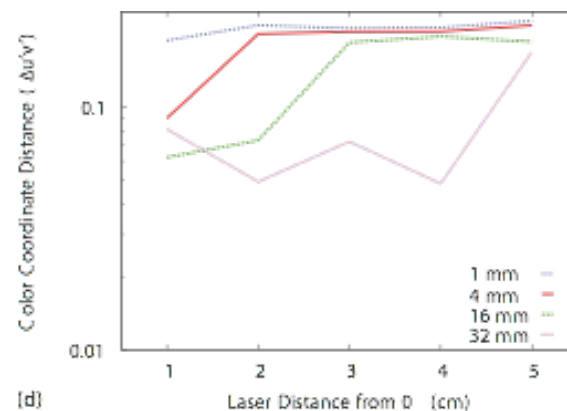
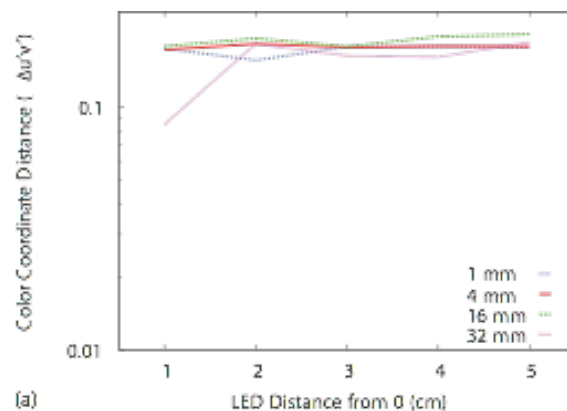
Reworked as single plot



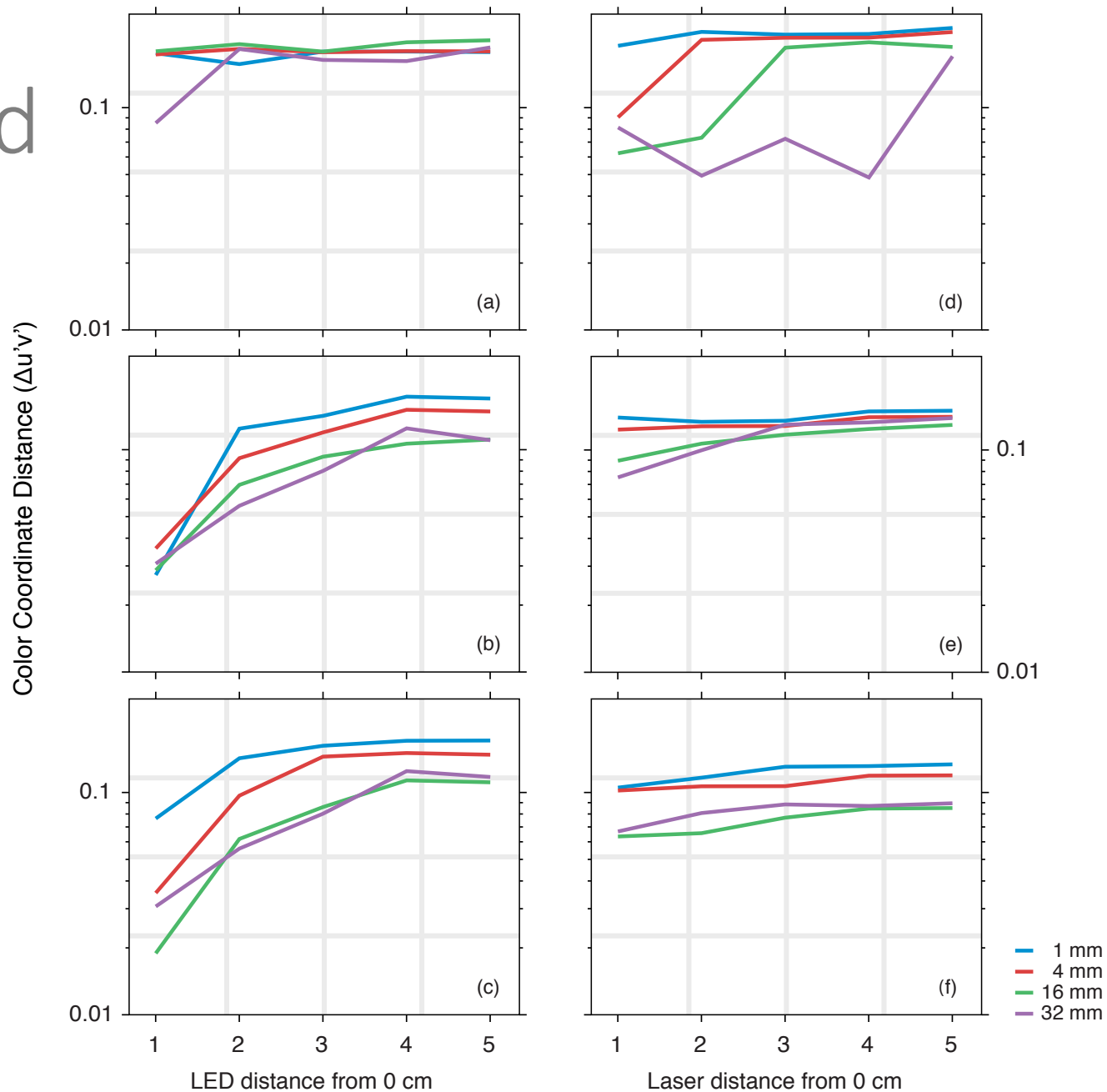
Reworked as
small multiples



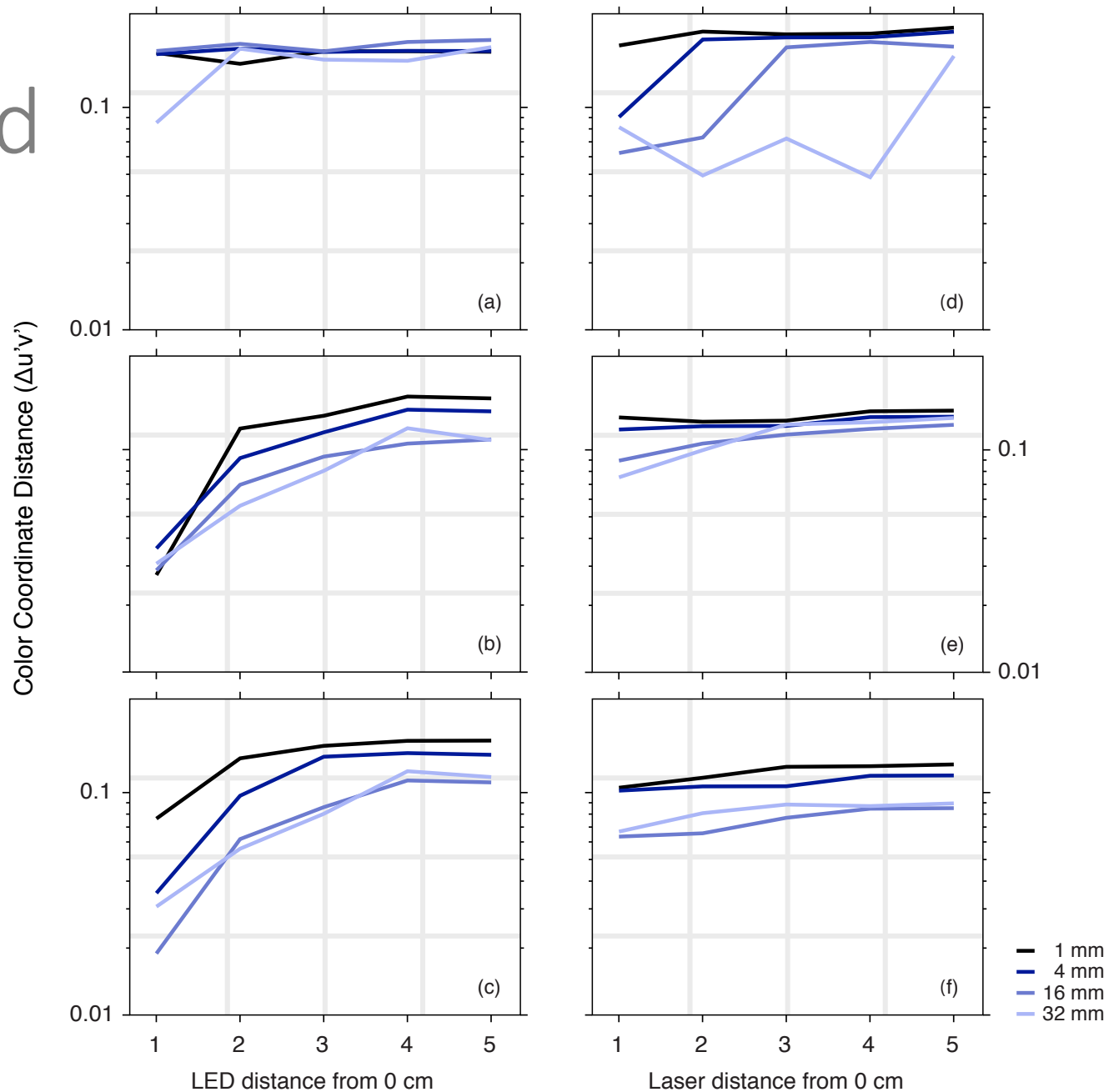
Original

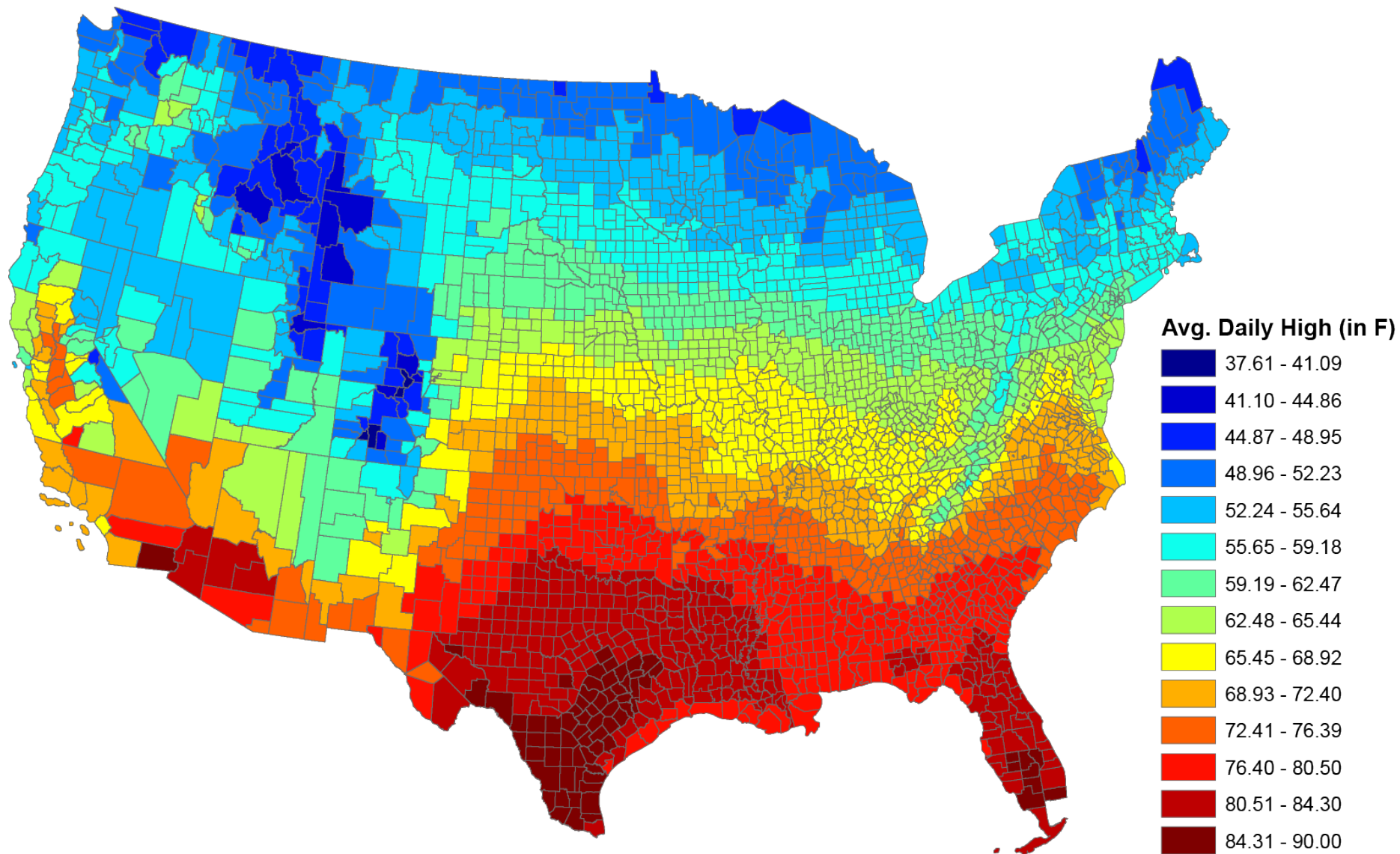


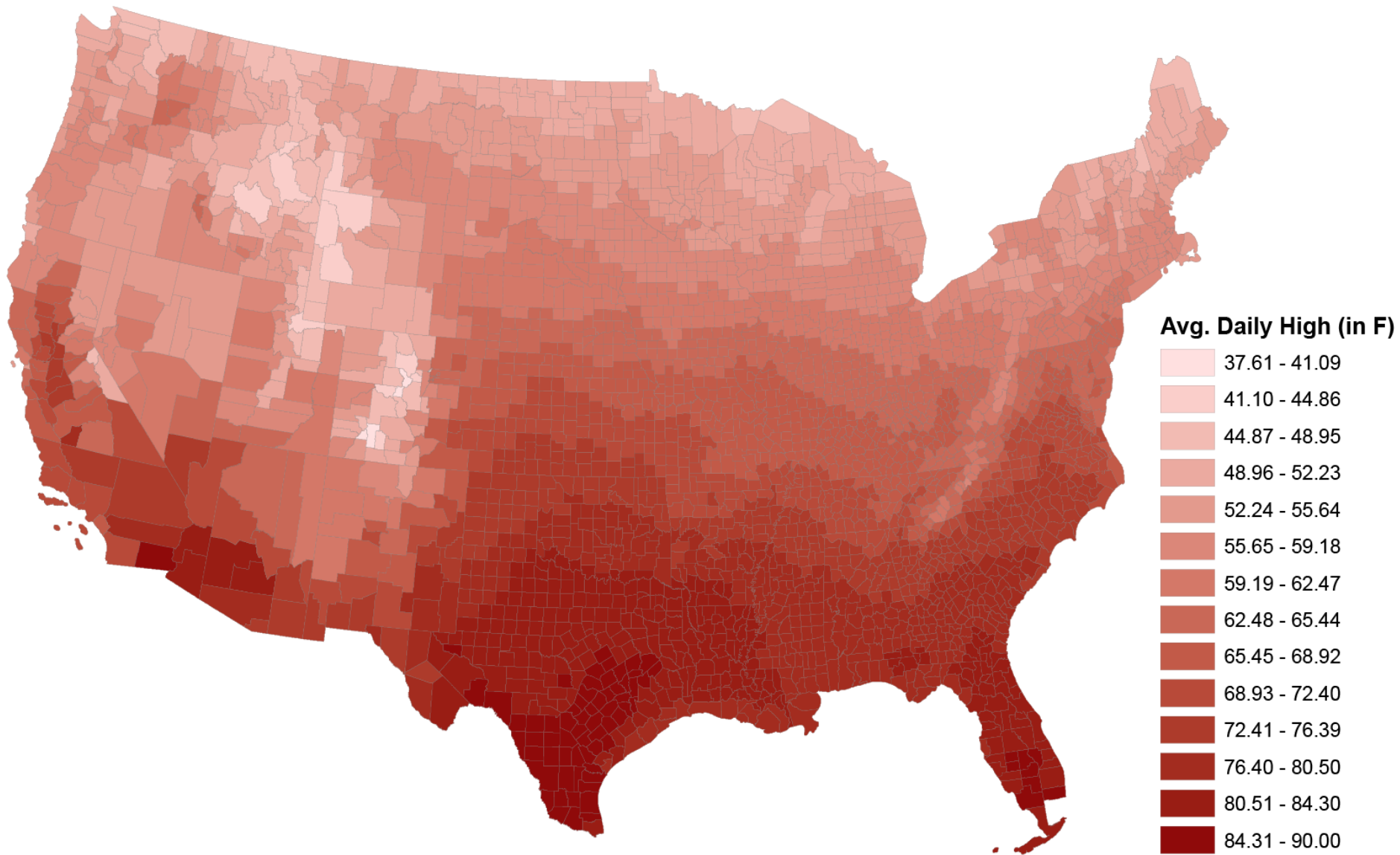
Reworked



Reworked

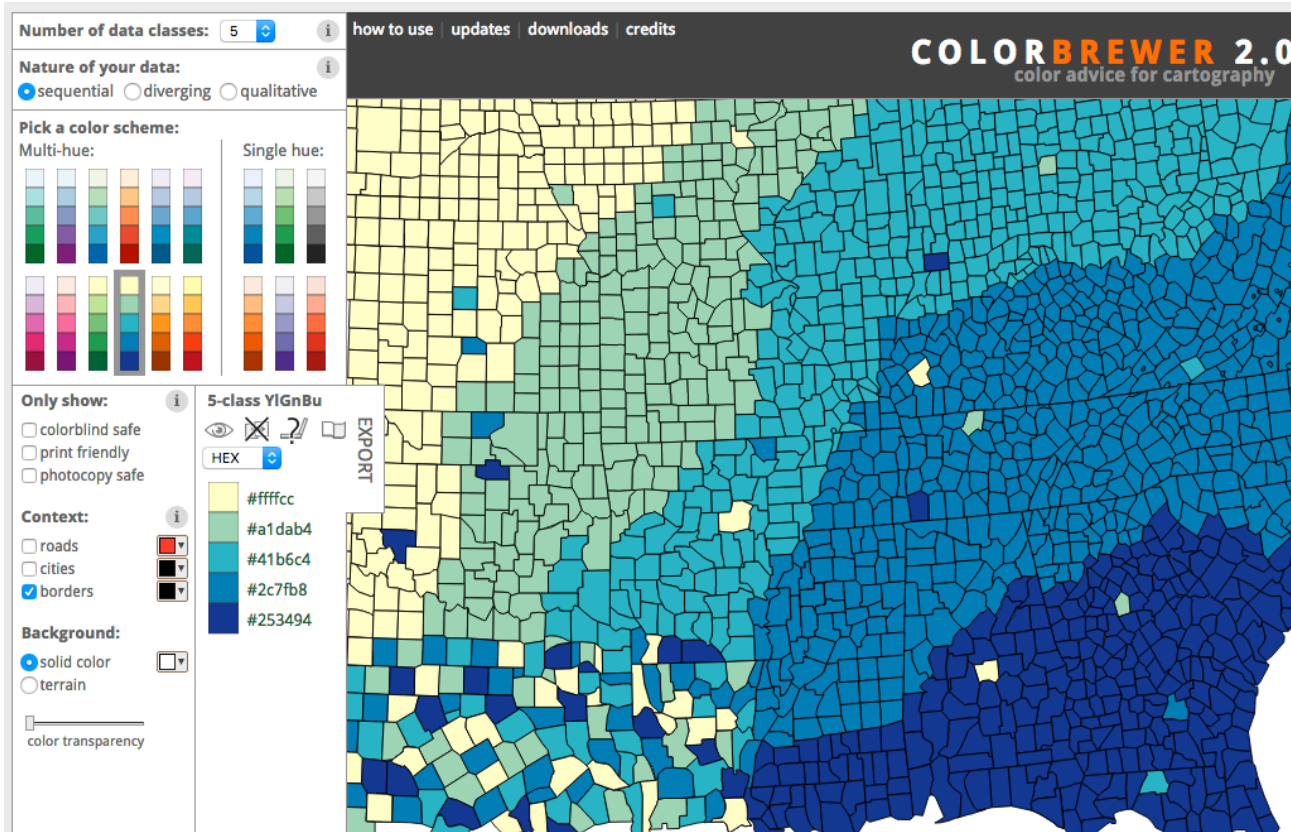






ColorBrewer for good colormaps

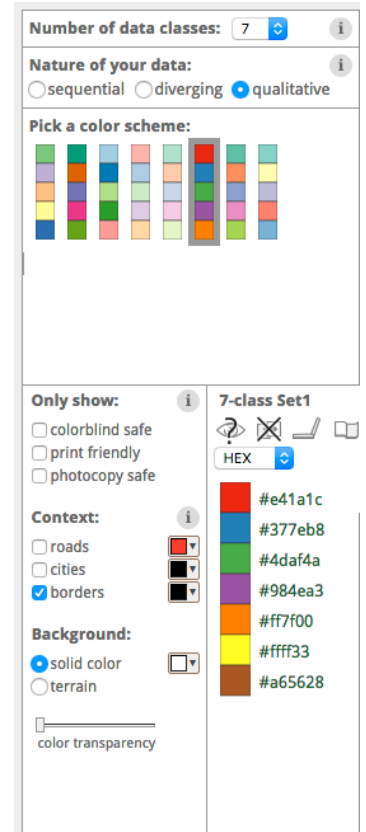
<http://colorbrewer2.org/>



© Cynthia Brewer, Mark Harrower and The Pennsylvania State University

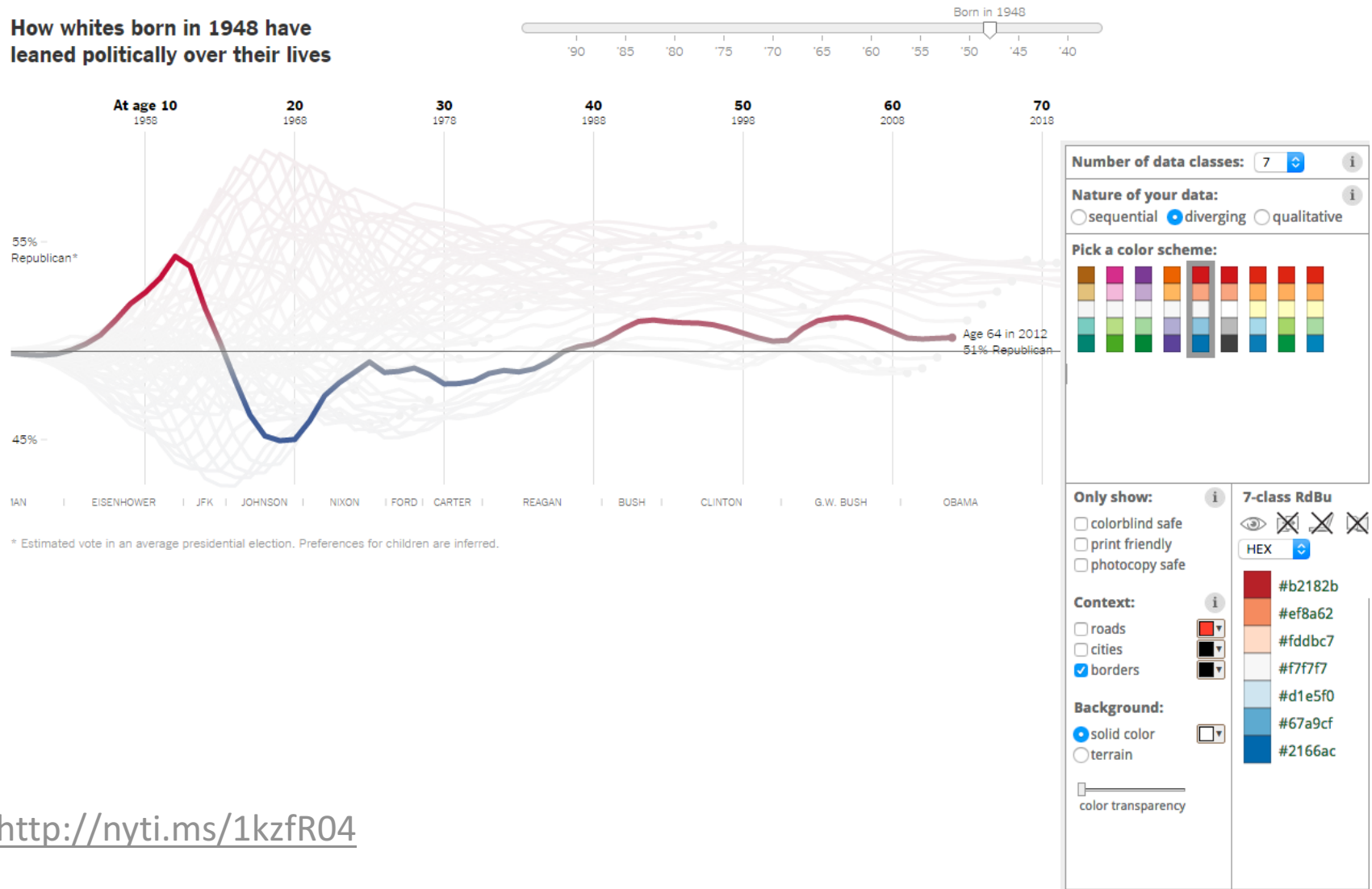
[Source code and feedback](#)
[Back to Flash version](#)
[Back to ColorBrewer 1.0](#)

axismaps



Do data have a natural center?

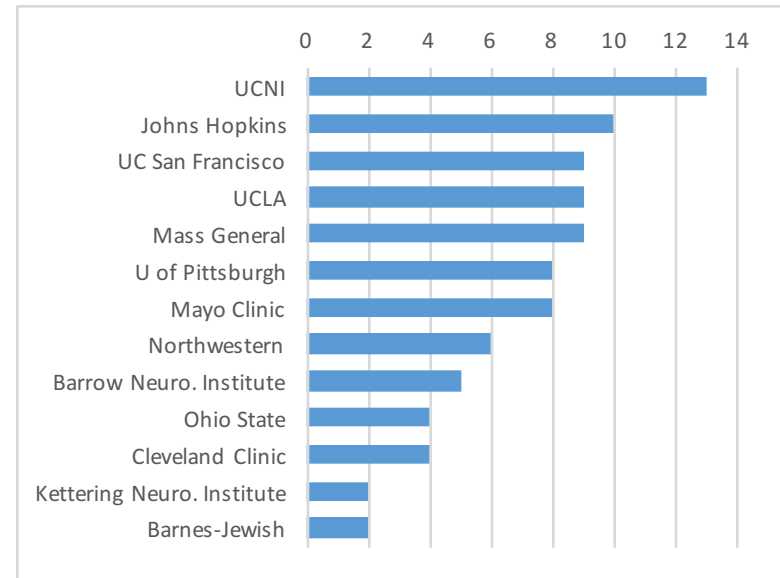
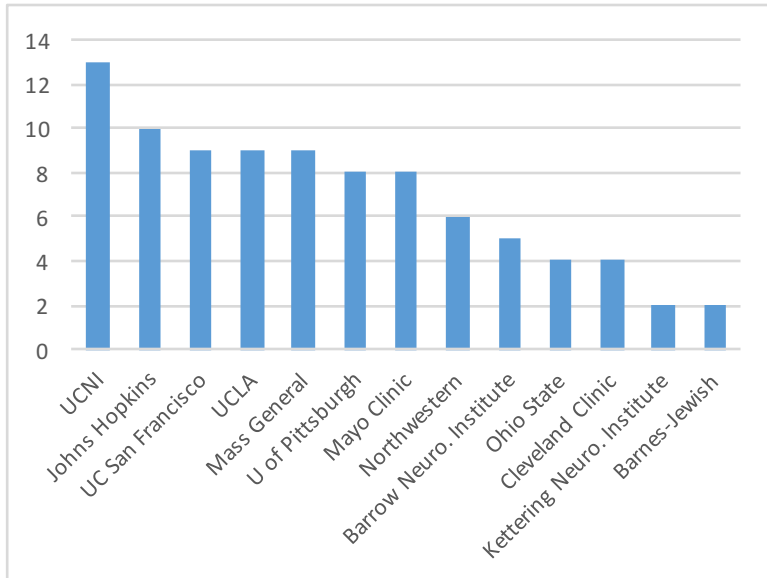
How whites born in 1948 have
leaned politically over their lives



<http://nyti.ms/1kzfR04>

Text to clarify

Keep text horizontal



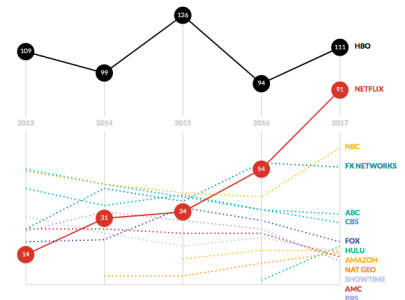
<http://www.storytellingwithdata.com/2012/09/some-finer-points-of-data-visualization.html>

Annotate figures directly

AAPL stock example



Netflix
Challenges
HBO at the
2017 Emmys



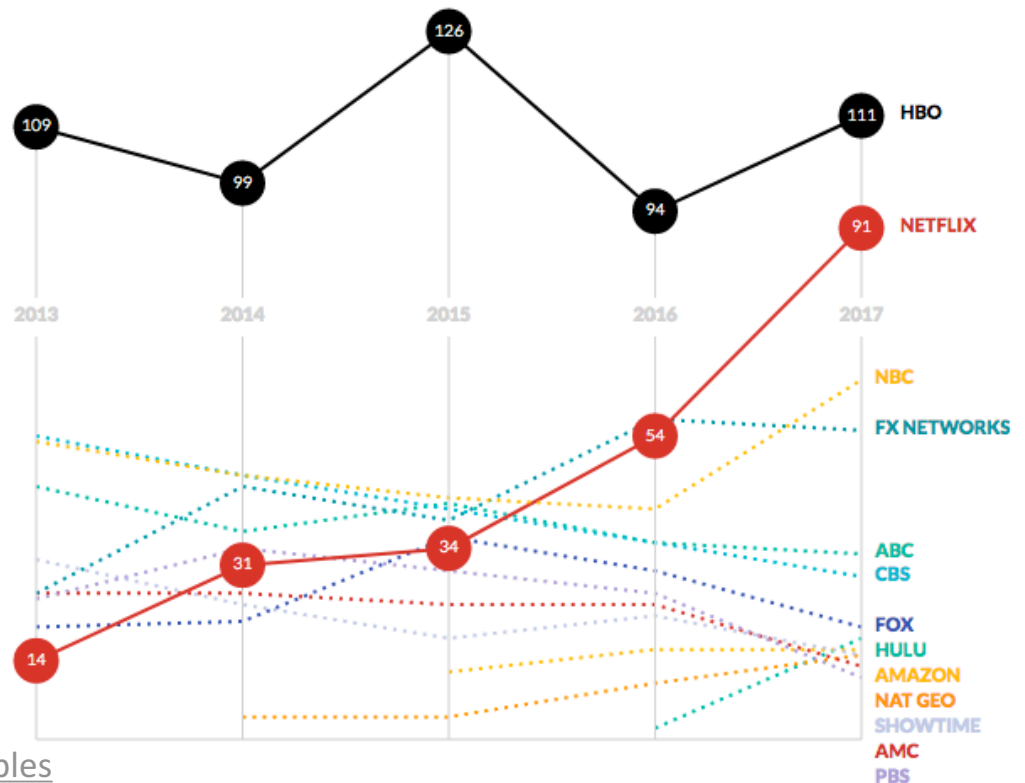
<http://d3-annotation.susielu.com/#examples>

Annotate figures directly

AAPL stock example



Netflix
Challenges
HBO at the
2017 Emmys

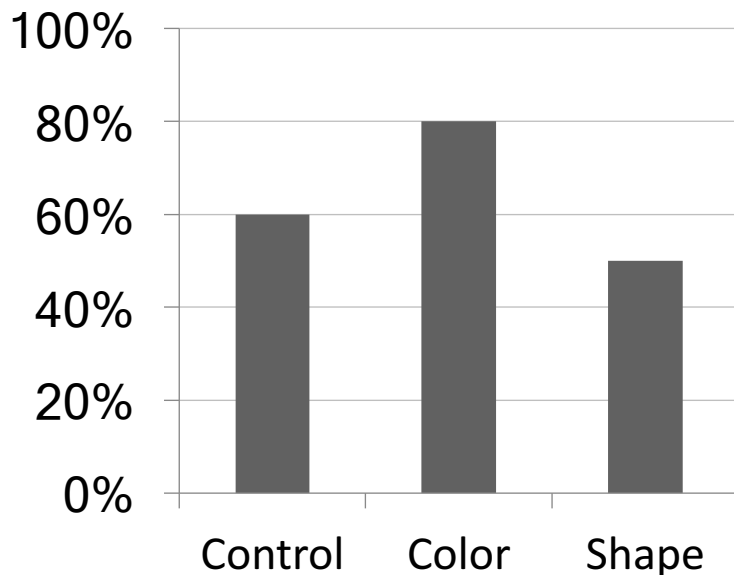


<http://d3-annotation.susielu.com/#examples>

Use descriptive titles

Active titles summarize trends in the figure and reinforce your message.

Accuracy versus Color and Shape



Accuracy Improved by Color, not Shape

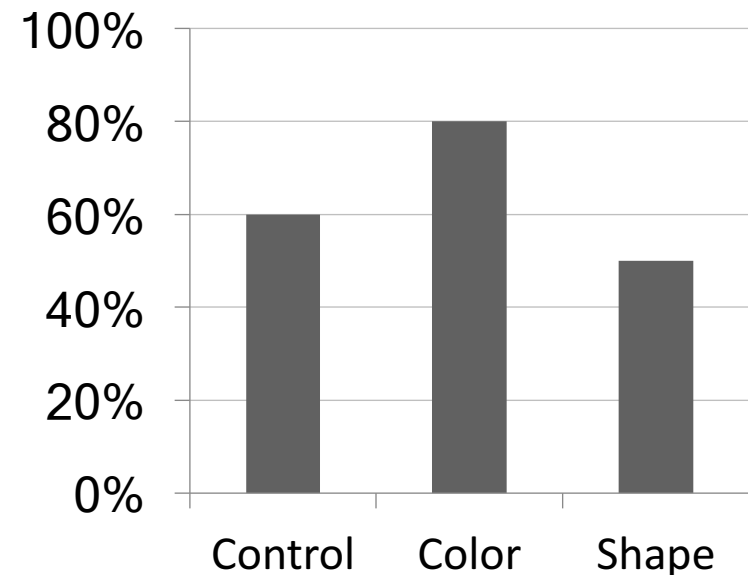
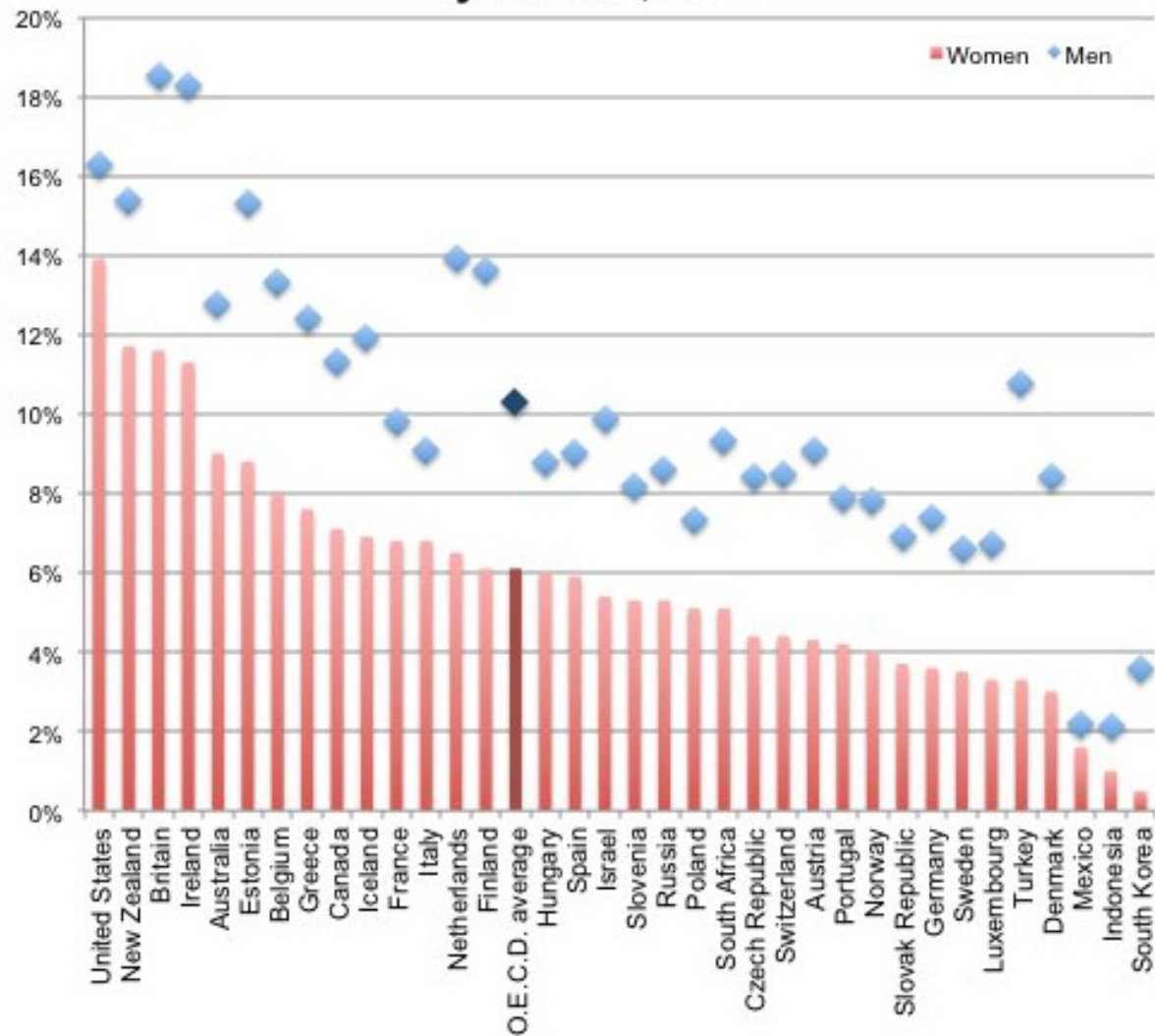


Figure rework

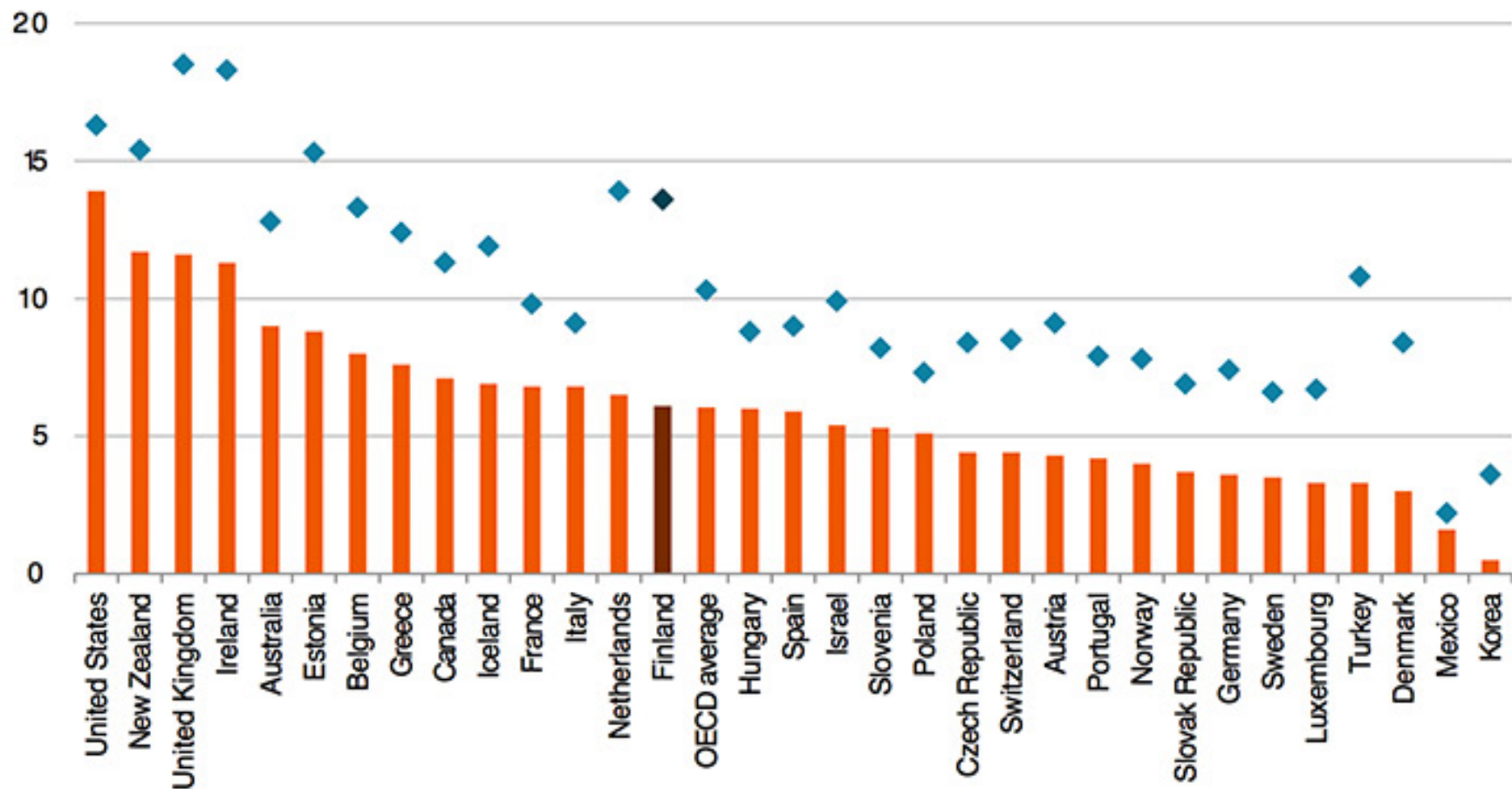


Percentage of Employed Who Are Senior Managers, by Gender, 2008



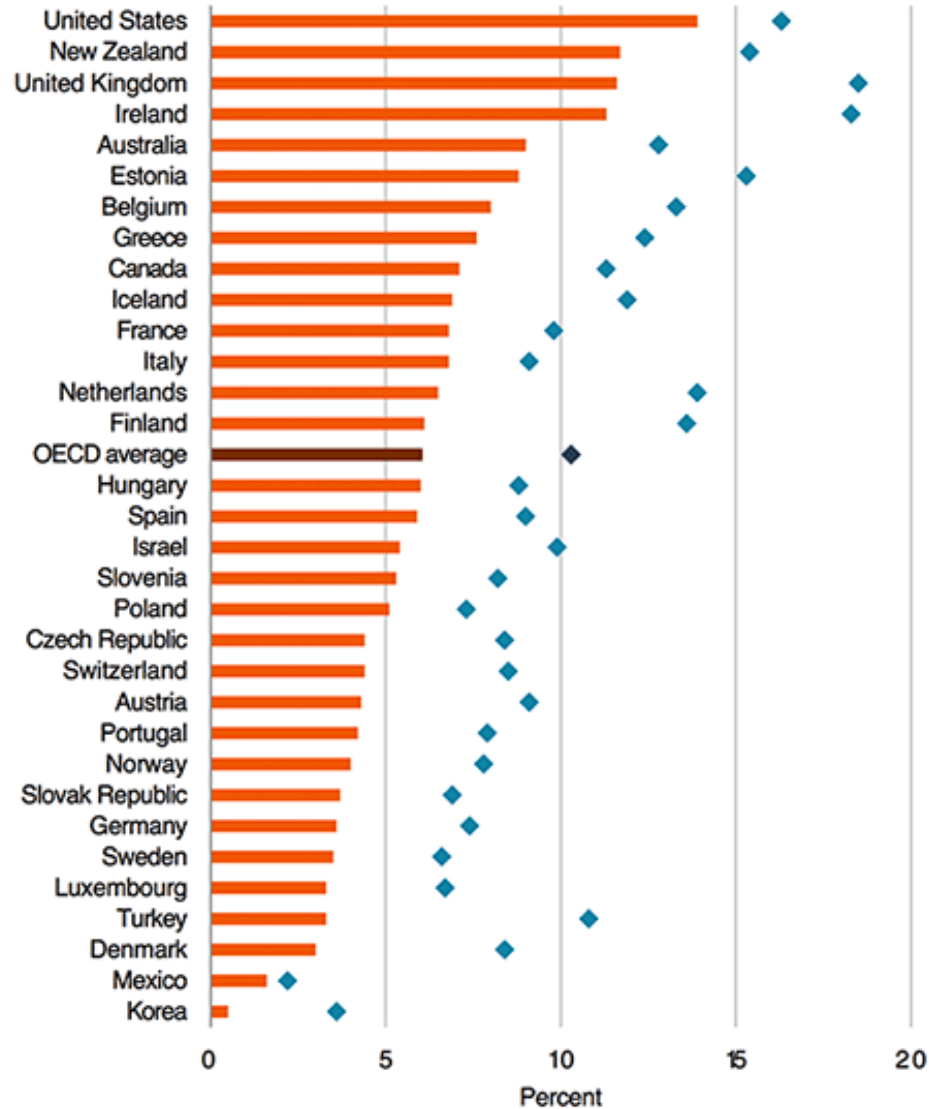
Percentage of Employed Who are Senior Managers, by Gender, 2008

(Percent) ■ Women ◆ Men

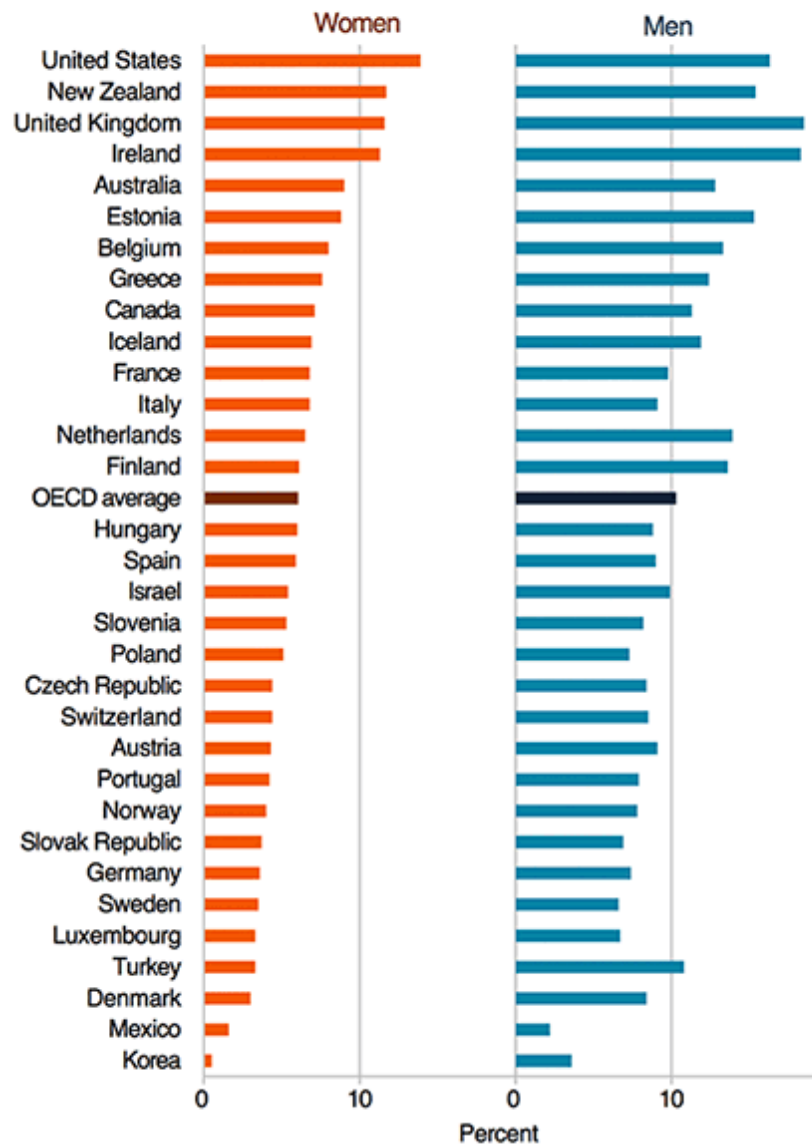


Percentage of Employed Who are Senior Managers, by Gender, 2008

(Percent) ■ Women ◆ Men

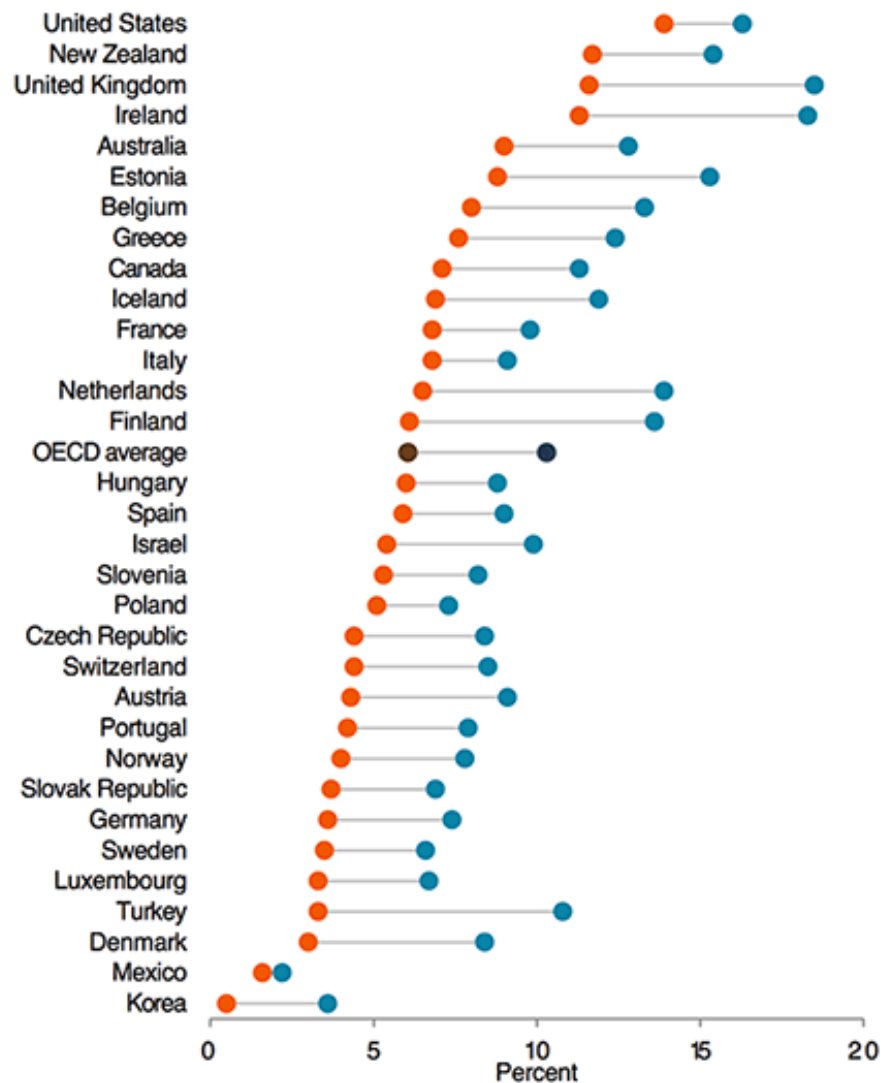


Percentage of Employed Who are Senior Managers,
by Gender, 2008
(Percent)



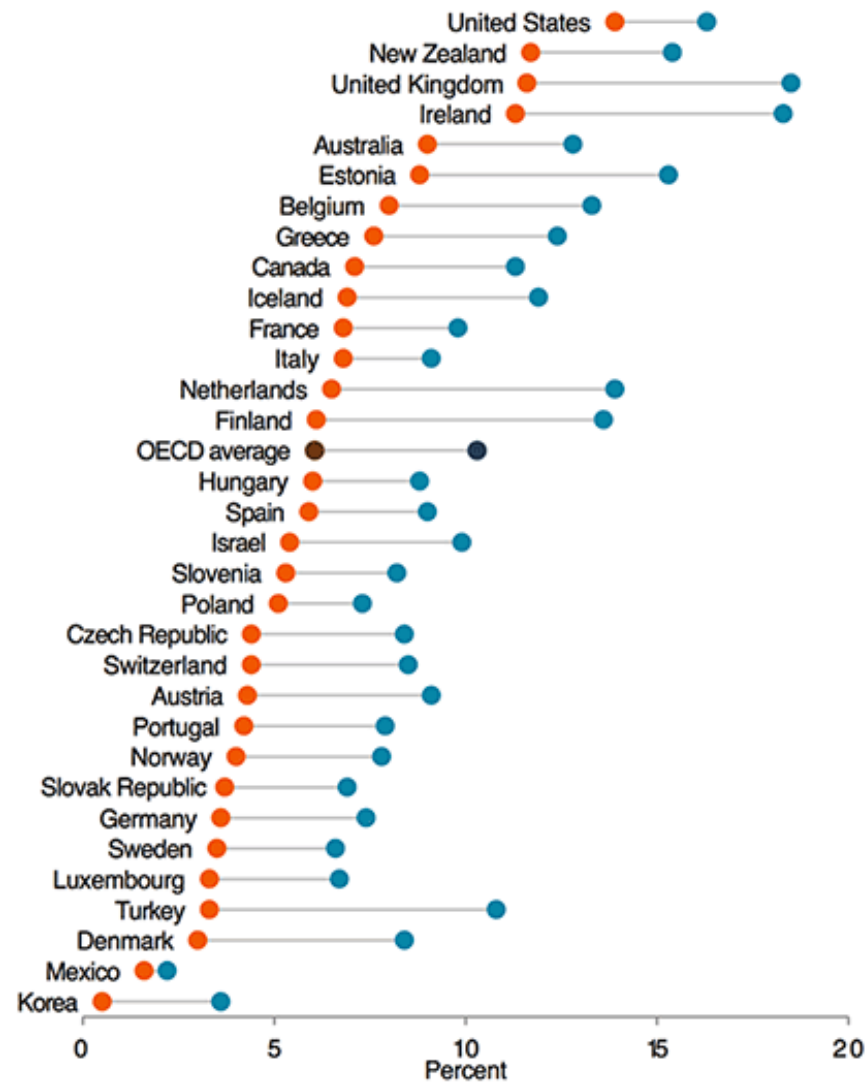
Percentage of Employed Who are Senior Managers, by Gender, 2008

(Percent) ● Women ● Men



Percentage of Employed Who are Senior Managers, by Gender, 2008

(Percent) ● Women ● Men

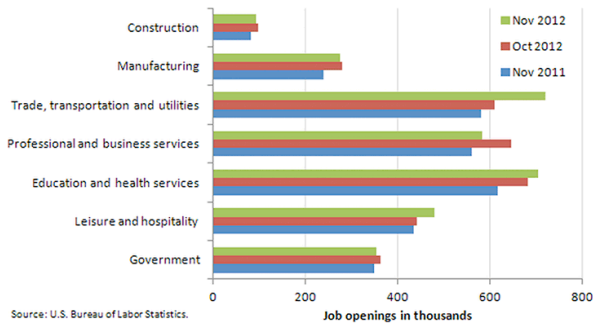


Other chart makeover examples

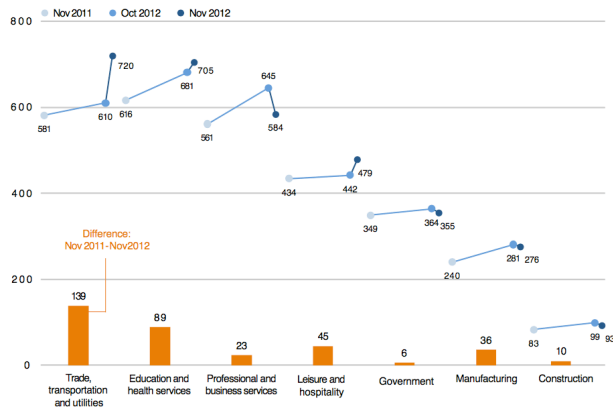
The Why Axis chart remakes

<http://www.thewhyaxis.info/remakes.html>

Job openings by industry, November 2011, October 2012 and November 2012, seasonally adjusted



Job openings by industry, November 2011, October 2012 and November 2012, seasonally adjusted (Thousands of jobs)



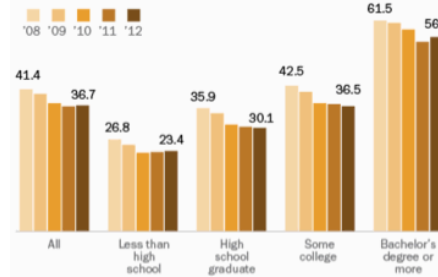
Storytelling With Data visual makeovers:

<https://www.storytellingwithdata.com/makeovers>

ORIGINAL

New Marriage Rate by Education

Number of newly married adults per 1,000 marriage eligible adults



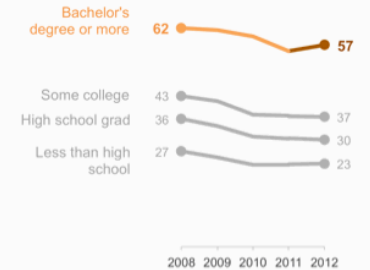
Note: Marriage eligible includes the newly married plus those widowed, divorced or never married at interview.
Source: US Census

PEW RESEARCH CENTER

COLE's MAKEOVER

New Marriage Rate by Education

Number of newly married adults per 1,000 marriage eligible adults



Note: Marriage eligible includes the newly married plus those widowed, divorced or never married at interview.
Source: US Census

PEW RESEARCH CENTER